



Shepherd Elementary School

THE MUSTANG

Home of the Shepherd Mustangs

January 21, 2014



- ▶ **Wed., Jan. 22 - Wed., Dec.**
- Deal Middle School presentation for parents of fourth- and fifth-graders, 6:30 p.m.

- ▶ **Fri., Jan. 24:**

- Records Day; school dismissed at 12:15 p.m.. (no aftercare)

- ▶ **Tues., Jan. 28:**

- Science Fair setup, 9 a.m., NOAA HQ, 1305 East-West Hwy., Silver Spring

- ▶ **Wed., Jan. 29:**

- Science Fair exhibition, 6-8 p.m., NOAA HQ, 1305 East-West Hwy., Silver Spring

- ▶ **Tues, Feb. 4:**

- Awards Day, 9 a.m.

- ▶ **Wed., Feb. 5:**

- Family Dinner Night (and Day), 7 a.m. - 9 p.m., Chocolate Crust, 5830 Georgia Ave. NW

- ▶ **Thurs., Feb. 6:**

- Healthy Thursdays, 6:30 p.m., gymnasium

- ▶ **Fri., Feb. 7:**

- Report cards distributed
- Ski Club trip

(Go to <http://www.shepherd-elementary.org/ses-calendar/> for a month-by-month listing of dates and events)

From the PTA President

Hi Everyone,

Thanks to all of you who came out to last Wednesday's PTA meeting. If you weren't able to attend, please see your child's classroom parent who has copies of the agenda and handouts that were distributed during the meeting. Our meeting featured Cathy Reilly and Ed Davies, representatives to the Student Assignment Advisory Team and they provided an update on the School Boundary Review Pro-

(see PTA President , page 2)

A Word from Mrs. Miles!

Greetings Shepherd Families,

Academic Blitz

Beginning January 21, 2014, we will begin an Academic Blitz for students in second through fifth grades. The purpose of the Academic Blitz is to help Shepherd move toward meeting our school goals in reading and math. Reading will be the initial focus for the next five to six weeks and then we will shift our focus to math. Students will be in flexible groups each afternoon from 2:30 pm to 3:15 pm with multiple teachers on their grade level, receiving instruction either individually or in small groups. We will also utilize Study Island, a computer based program, for some assignments and homework. Grade level teachers will be providing your child with their password and login to complete assignments and homework by the beginning of next week. Parents, we would like your help in ensuring that students are completing their homework assignments on Study Island. If you have any questions please contact your student's teacher.

Time to Recommit

In the January 7th edition of the Mustang I discussed New Year's resolutions and how the New Year is a time to reflect on the changes we want to make, need to make, or a time to recommit ourselves to just doing the right thing. Two weeks ago I recommended a few things that we as a school family can do to help create a better school community. However, now I am asking each of you to stand up and make a commitment to helping us create a better school community by signing the Parent Agreement found on page 5. This agreement was developed through the collaborative efforts of the Local School Advisory Team (LSAT). The purpose of the agreement is to increase parental involvement and encourage a renewed interest in helping our school to become the best school! Please take time to review the agreement and join others in making a commitment. Signed forms should be returned to school no later than January 31st, 2014.



(see Miles, page 2)

PTA President _____ cont'd from page 1

Miles _____ cont'd from page 1

cess and listened to our concerns. They also invited us to an Education Forum for Ward 4 on Tuesday, Feb. 11, 2014, at the Takoma Education Campus located at 7010 Piney Branch Road NW, Washington, DC 20012, from 6pm to 8pm.

The topics for discussion include:

- Where are our children attending school now?
- What are the projections for school age children for the future?
- What is the current status of our schools, DCPS and Charter? How do we gain access, how far are we traveling, what is our current feeder system of DCPS schools? What is happening with modernizations?
- Do we want to maintain the K-8 model in DCPS Ward 4 schools or invest in middle schools?

These issues are all important to the entire Shepherd community, and we should have our voices heard. I hope to see you all there.

Sherilyn

LSAT Report

Shepherd's Local School Advisory Team continued its hard work following up and following through on ways it identified can anchor the school more solidly in the LSAT's priorities of parental engagement, community engagement, academic enrichment, and "culture and climate."

LSAT members checked off items from a five-page, 11"x17" spreadsheet that ranged from things like the Spelling Bee, a new Cultural Arts Night, other academic opportunities and contests, the upcoming Shepherd Park potluck, and even next month's planned open house to showcase the school's renovations.

The work was completed just in time, as February augurs the start of a new budgeting cycle for the 2014-15 school year.

The next LSAT meeting will be held on Wednesday, Feb. 19, at 4 p.m. It will focus almost entirely on the budget. Parents are welcome to sit in on LSAT meetings. If personnel matters arise, they may have to leave the room so they can be discussed in confidence among the LSAT members.

They may be returned to your child's teacher or to Mrs. Brooks in the main office.

Lost and Found

Our lost and found area is across from the main office. Items are donated to goodwill at the end of the month. If your child is missing an item, it may be located in the lost and found. To help keep the number of lost items to a minimum please be sure to label everything!

Mobile Dentist

The mobile dentist is coming to Shepherd and your student is invited to receive a free dental screening. The District Office of DCPS Schools DC Health Department have approved Big Smiles DC ...the mobile dentist to be the dental provider for wards 1-5. Big Smiles provides both prevention and restorative dental services. They see children from 18 months to 18 years of age with no charge to the district or school. Big Smiles meets state mandated guidelines, providing each child with a report card of all completed treatment for both the parent and school. Permission slips along with more information about the Big Smiles will come home with your child on Tuesday, January 21, 2014. If interested, please complete and return the form to school no later than Friday, January 24th.

Principal's Book of the Month

The Principal's Book of the Month club meeting will be held on Friday, January 31st. Students in grades PK through 5th who read the book and complete and turn-in one of the reading assignments to the main office by Wednesday, January 29, 2014 are eligible to participate. This month's book is "Henry's Freedom Box: A True Story from the Underground Railroad". If you would like to hear the story read online, please visit... <http://vimeo.com/20964070>. This is a family activity and parents should read and discuss the story with their student.

This Month's Assignment Options

2nd through 5th Grade Activity (choose 1)

Create a character trading card using a character in the story. Be sure to answer all of the questions. When you are finished, print it and turn it in. Trading card website: http://www.readwritethink.org/files/resources/interactives/trading_cards_2/

In the story Henry looked up at the sky and said, "Free Bird, Happy Bird". What did Henry mean by that statement and how does this connect to Henry's life?

PK through 2nd Grade Activity

Draw a picture of Henry inside of the box. Write a sentence or sentences about how Henry might have felt traveling in the box. Be sure to tell why he felt that way. Parents may transcribe for PK and K students.

Have a great week!

Warmest regards,

Jamie Miles

Principal

New Family Dinner Night Partner!



We've got an in-city partner for our next Family Dinner Night. It's Chocolate Crust, 5830 Georgia. (Some of you may remember it under different ownership as the Washingtonian Deli.) The date is Wednesday, Feb. 5.

It's another ALL-DAY affair. Chocolate Crust opens at 7 a.m. and closes at 9 p.m. They offer breakfast, lunch, and now are rolling out a new dinner menu.

You can be a hero at the office and pick up a mess of bagels, for instance. Or "doissants," the "cronut"-style pastry that's all the rage. But true to its name, Chocolate Crust specializes in breads and pastries with a touch of chocolate in the recipe. (Non-chocolate counterparts also available, but why would you want to?) Someone in my family -- and I'm not saying who -- is already interested in their "CBLT" -- a BLT sandwich on chocolate bread. They even offer chocolate-crust pizzas, cocoa shrimp po' boys, and crusted cocoa mac and cheese.

Chocolate Crust will rebate 20% of your purchases to the PTA, but you've GOT to say you're with Shepherd.

Two other issues: Seating is limited -- just room for 14 inside -- so be prepared to take out your order just in case. Also, parking is limited. You may need to park closer to the firehouse (or in the Rite Aid lot a block away) and walk back. But, like Pete's Apizza, Chocolate Crust has a curbside pickup service if you call in your order in advance and pay with a credit card.

Come hungry, and go happy!



The Silver Anniversary Of Jazz Night Salutes Horace Silver

Horace Silver (born Horace Ward Martin Tavares Silva, September 2, 1928, Norwalk, Connecticut, United States) is an American jazz pianist and composer. Silver is known for his distinctive, humorous and funky playing style and for his pioneering compositional contributions to hard bop. He was influenced by a wide range of musical styles, notably gospel music, African music, and Latin American music and sometimes ventured into the soul jazz genre.

Silver moved to New York City in 1951, where he worked at the jazz club Birdland on Monday nights, when different musicians would come together and informally jam. During that year he met the executives of the label Blue Note while working as a sideman. He eventually signed with them, remaining there until 1980. In New York, he formed the Jazz Messengers, a cooperatively-run group with Art Blakey. Silver is one of only three surviving jazz figures featured in the iconic photograph "A Great Day in Harlem."

Silver's music has been a major force in modern jazz. He was one of the first pioneers of the style known as hard bop, influencing such pianists as Bobby Timmons, Les McCann, and Ramsey Lewis. Silver's talent did not go unnoticed among rock musicians who bore jazz influences, either; Steely Dan sent Silver into the Top 40 in the early 1970s when they crafted their biggest hit single, "Rikki, Don't Lose That Number," off the bass riff that opens "Song for My Father."

The 25th anniversary of Shepherd's annual Jazz Night is Friday, Feb. 28, starting at 6 p.m. in the school auditorium. It's a pot-luck affair. Please bring a dish to pass. We'll also pass a hat to defray the PTA's costs of hiring the musicians who will entertain us and our children.

Why Parent Involvement is Important in a Child's Education

We as parents are constantly being asked to do things for our children by the school. It could be anything from assisting with homework to volunteering in the child's classroom to serving on the PTA. We are told or feel that it is for the good of the child, but is it really?



I have some GOOD NEWS!! Decades of research have found that parent involvement in their child's education has a positive effect on how well the child performs in the classroom and on standardized tests.^{1,2} Furthermore, students with involved parents have better attendance records, drop out less often, have higher aspirations, display fewer violent tendencies, and have a better outlook on school.¹ The data crosses all social economic lines and it produced the same results that children achieve greater scholarly heights the more the parents are involved in their child's education.¹

Now that we know that parent involvement really works, let's talk about what give the biggest bang for the buck or time. Direct involvement with the child gives the biggest boost to their education, followed by volunteerism, and then serving on governing bodies. Below are a few things that each family can do to become involved parents in their children's education.

- Establish a family routine that supports education such as having a designated time to do homework, family reading time, and a standard bedtime.
- Assist with the homework. Ask your child about the school day.
- Communicate with the teacher on a regular basis and other parents.
- Participate in the school activities which support the learning occurring in the classroom.
- Assist the teacher where possible (i.e. go on field trips, help in the classroom, etc)
- Volunteer for the PTA, LSAT, or any other Ad Hoc committee that may form to address education issues.

References

1. Bogenschneider, K., & Johnson, C. (2004, February). Family involvement in education: How important is it? What can legislators do? In K. Bogenschneider & E. Gross (Eds.), *A policymaker's guide to school finance: Approaches to use and questions to ask* (Wisconsin Family Impact Seminar Briefing Report No. 20, pp. 19-29). Madison: University of Wisconsin Center for Excellence in Family Studies.
2. (2002, March). What Research Says About Parent Involvement in Children's Education: In Relation to Academic Achievement. Michigan Department of Education.



Parents it's that time again for the Fifth Grade Exhibition. All parents of fifth grade students are invited to attend an information meeting on **Wednesday, Jan. 22, 2014**, at 6 p.m. The Primary Years Programme Exhibition is a culminating experience for students in their final year of the Primary Years Programme. Students are expected to exhibit their learning of the essential elements of the PYP. The Exhibition represents a significant event in the life of an IB PYP school, the student and the whole school community. This year's Exhibition will focus on the Transdisciplinary Theme, "How We Express Ourselves." Students have begun to examine the theme and will decide on the issues that are important to them over the next couple of weeks. Following this, students will create their Central Idea and their Lines of Inquiry which will drive the Exhibition. More information about the Exhibition will be provided in the upcoming weeks. If you are interested in participating, we are in need of mentors who are able to work with a group of students as they investigate their issue and take action. Please contact the IB Coordinator at 202-576-6140 or sandra.hart@dc.gov for more information.

Have a super week!

--Ms. Sandra Hart, IB Coordinator

*Shepherd Elementary School*7800 14th Street N.W.

Washington, DC 20012

Phone: 202-576-6140 Fax: 202-576-7578



Parent Agreement

We (I), _____, as parent(s) or guardian of a Shepherd Elementary School student, pledge to make our best effort to ensure that our Shepherd student takes advantage of the school's educational opportunities.

We also acknowledge that we have read, and will abide by the Student - Parent Handbook.

We also pledge that we will:

- Actively participate in the educational process by attending my parent-teacher conferences, and classroom, school and PTA activities.
- Ensure my child arrives at school on time between 8:15 a.m. - 8:35 a.m., prepared to learn.
- Go over with my child what was covered in school each day and assist my child to understand their classroom instruction.
- Observe school parking rules, such as not double parking, blocking crosswalks, parking in front of the school during school hours, etc.
- Provide my child with a quiet, well-lighted study area and to review my child's homework for completeness and understanding.
- Read and respond to school notices.
- Volunteer at least 10 hours per school year at Shepherd Elementary.

Signed: _____ Date: _____

Student Agreement

I, _____, as a Shepherd Elementary School student, agree to act at school in a healthy, respectful, responsible and safe manner. I also pledge that I will:

Learn and follow the Shepherd School Pledge.

Respect the rights of others.

Treat all property with respect.

Take responsibility for my classes, assignments and achievement.

Signed: _____ Date: _____

Each student in a family should sign a copy of the agreement.

Our Mission

All stakeholders are committed to the advancement of students' academic, emotional, social and physical well being within a supportive, creative and flexible environment in which children learn to think compassionately and learn globally.

Auction Action!

We are going to Morocco! At least virtually!



Moroccan is our theme for the tenth annual Shepherd Gala to be held Saturday, March, 15, in the beautiful atrium of Wilson High School.

The Moroccan Embassy has been in contact with our Gala Committee to lend advice and assistance.

Speaking of assistance, we'll still need help until Gala Day itself with phone calls, publicity, and soliciting items for the auction, plus on the big day, for things like set-up and take-down. To offer your help, send a message to either Susan Laudadio at serlaudadio@hotmail.com, or Kate Wood at kateandmama@yahoo.com.

Tickets go on sale Feb. 1. Get that sitter now and plan to attend!

Hello, this is Henry. I am very excited about the upcoming science



fair. Students have been working on their science boards, which explains their projects and the results with data and pictures. This week Shepherd students will visit the National Oceanic and Atmospheric Administration, whose scientists judge our projects. First a student will explain their project, then the scientists will ask questions, which the student has to answer. For example, the scientists will ask students what is the hypothesis of their projects. If a student wins first place in their grade, they will move on to the citywide science fair.

Good luck, everyone!

-- Henry Trimble, fourth-grader

Happy Campers!

During the past two weeks, when Washington has seen bone-chilling temperatures and dreary, rainy days, there's nothing better to sunny-up people's dispositions than the prospect of summer camp!



The summer camp listing on the school website has been thoroughly updated. All camps are in alphabetical order. All (or nearly all) have suggested age ranges for campers, plus phone numbers and/or email addresses and/or websites for parents to review when considering camps for your children.

Go to <http://www.shepherd-elementary.org/resources/summer-camps/> for your peek at dozens of summer camp listings in the District and nearby sites in Montgomery County.

Shepherd Park Potluck Jan. 26

The Shepherd Park Citizens Association is hosting its tenth annual New Year/New Neighbor Potluck on Sunday, Jan. 26, 5-7 p.m., at the social hall of Northminster Presbyterian Church, Kalmia Road at Alaska Avenue. Hang out and get to know current, new and maybe even future neighbors. It's a great way to engage with the community.

Because it's a potluck, bring something tasty to eat based on the first letter of your last name:

A-L: main dishes

M-R: side dishes/vegetables/salads

S-Z: Desserts



The Shepherd Park Citizens Association will supply beverages. If you want to contribute to a kosher table at the potluck, get in touch with former Shepherd parent Sarah Gershman at sarah.gershman@gmail.com.

PTA Meeting Highlights

The big item on the agenda at last week's PTA meeting was a conversation with Ed Davies and Cathy Reilly, two of the Ward 4 representatives of the task force assembled to make recommendations to D.C. Public Schools on boundary redrawing.

"We'll have to wrestle with grandfathering," or letting students continue to attend a particular school or follow of prior feeder pattern that could be changed by the redrawing process, Reilly said — and siblings will have to be considered as well. "We have no desire to create a huge upheaval within the city," she added. "We don't want to change things any more than absolutely necessary."

In the Shepherd Park neighborhood, there are 217 children eligible to go to Shepherd; only 90 of those are currently enrolled there. Their parents send them to places like Lafayette in DCPS, or charter schools like Yu Ying, LAMB, and Capital City; there's one block in the city, Reilly said, where children go to 10 different schools. A majority of the out-of-boundary students going to Shepherd live elsewhere in Ward 4.

There is no dedicated middle school in Ward 4. Shepherd's feeder pattern was adjusted after Paul Junior High became a charter school in 2000. Since then, students have fed into Deal Middle School with the right to attend Wilson High School, which has the highest four-year graduation rate of any "neighborhood" high school in DCPS. Eighty percent of Shepherd Park children with the right to go to Deal make their way there.

Ward 4's "education campuses" — putting elementary and middle school students in the same building — are getting overcrowded at the younger end of the scale, Reilly said, and principals fear they're short-changing the older students. She encouraged attendance at a Feb. 11 meeting for Ward 4 parents to chart a course for the future of public education in the ward. Ward 4, she added, has gotten the least amount of capital dollars in renovation and reconstruction than any other ward in the city.

Davies said the task force charged with making recommendations meets the third Tuesday of each month. The meetings are closed, but notes are posted at <http://dme.dc.gov/book/student-assignment-and-school-boundaries-review-process/advisory-committee-meeting-materials>.

The overriding question is quality. What credible options are there? Without them, how does DCPS build the capacity — and can parents trust DCPS to expand its capacity for quality? "None of this works if there's not quality," Davies said. Roosevelt High School is getting its own renovations. Reilly said 200 students in Roosevelt's attendance area now attend Wilson. Can they be lured to return? Without a guarantee of quality, parents may find no other choice but to consider charter schools, private schools, or moving to a new school district.

In other PTA meeting news:

*There was also discussion during the treasurer's report of the advisability and feasibility of the PTA acting as a conduit for parents' other donations and financial contributions to the school, particularly when it involved their children's classes. The PTA officers plan to discuss the issue and hope to report back at February's PTA meeting.

*Susan Laudadio, one of the co-chairs of the Gala Committee, spoke up for this year's Gala, to be held Saturday, March 15, in the atrium of Wilson High School. There will be a Moroccan theme, and the Moroccan Embassy has expressed a willingness to partner up with Shepherd on the event. Help is needed to keep this gala as successful as those in past years, including making phone calls, putting the touch on businesses and retailers to sponsor the event, but ads and/or donate auction prizes, advertising, same-day setup and take-down, communications — and classroom parents to secure the ever-popular "classroom donations" that so often fetch big bucks in spirited bidding. Susan can be reached at serlaudadio@hotmail.com if you can pitch in.

*In Mrs. Miles' principal's report, she noted that before the start of winter break, the Lost and Found was divided into three or four trash bags worth of clothing for donating, and another three or four trash bags filled with clothing that was dirty, or missing a pair, and was chucked as trash.

She also talked about her "Attendance Matters" initiative, saying that a student who is even just five minutes late can disrupt and delay classroom instruction for up to 15 minutes. Mrs. Miles introduced a representative from the Georgia Avenue-Rock Creek East Family support collaborative, which can help families on attendance issues.

*Parents were introduced to Ms. Angel Hunter, the principal intern who will be at Shepherd for the rest of the year. She is a Mary Jane Patterson fellow. The fellowship is named for the first African American in the DCPS system to serve as the principal of an African American-majority school, which was Dunbar High School.

*Eve Lotter and Folami Jenkins talked about the upcoming Jazz Night on Feb. 28 — a key event in Shepherd's life as it will be the silver anniversary of Jazz Night..

The next PTA meeting will be **Wednesday, Feb. 19, at 6:30 p.m.** Parents and the community will be invited to an open house at around 5 p.m. that day to inspect the renovations done so far at the school.

Traffic Safety Tips



Busy cities like New York used to have signs that read, "Curb your dog" – for obvious reasons! At Shepherd, we dare to say, "Curb your child" – again, for one obvious reason: safety.

Why would you let your children out in the middle of traffic? To save a few seconds? A driver trying to make a hasty getaway from school could all too easily clip the door. Or worse, your child. As grown up as we like to think our children are, they have not developed the sense to gauge spatial distances and speed of oncoming vehicles. A few seconds is not worth the risk of injury, or even worse.

Loose Change Winners Aplenty!

We have several winners to announce as a result of December's Loose Change contest.

First, we collected \$500 – a marked increase over last year.

The class with the greatest collection was Ms. Pethtel's kindergarten class, which collected \$90 (and change, of course). Her students will get a uniform-free day as a reward.

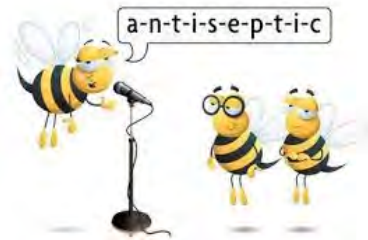
Half the collection was turned over to Mrs. Miles so that she could give the money to Shepherd families in need over the holidays.

The other half was retained by the PTA so that it can pitch in on projects helpful to the school and all its students.



Spelling Bee Winners Unveiled!

We have winners in Shepherd's spelling bee for students in grade 1-3. Chyna Holloway took first place. Tobias Lindo finished in second place, and Grace Kao landed in third place. Congratulations to our participants, and especially to our top spellers!



Science Fair: Fair to Excellence

The Science Fair is coming soon and so are due dates and help dates.



Science Fair projects by students in grades 3-5 must be turned in no later than this Tuesday, Jan. 21. Projects in grades 2 and younger must be turned in by Friday, Jan. 24.

Ms. Ulba and the rest of the Science Fair Committee needs parent power on the morning of Tuesday, Jan. 28, to shuttle Science Fair boards from Shepherd to NOAA headquarters a mile away and to set them up. Usually, it takes two or three parents a few hours to get the work done. The more parents involved, the less time it takes.

You can see the Science Fair exhibition Wednesday, Jan. 29, 6-8 p.m., at NOAA HQ. The judges will ask questions of our budding scientists. (You may be able to do a sneak preview the evening before, without the judging and such.)

Science Fair winners will be announced during Shepherd's next round of Awards Day ceremonies, set for Tuesday, Feb. 4.

Grocery Store News

Do you shop at Snider's Super Foods in Silver Spring? If so, start rummaging through your purses, wallets, pockets, dressers and junk drawers for receipts from 2013. Bring them to school ASAP. Shepherd gets 1 percent back on every dollar in receipts we've totaled up!

Giant's A+ Rewards program closes in March. If you shop at Giant, better to buy up big in the next month and a half. Our school code is 00154.

At Safeway, an alert Shepherd student noticed that the 14-ounce box of Cheerios had not one but two Box Tops for Educations seals on the front of the box, but the back of the box was a cut-out-able Box Tops collection sheet. Shepherd is probably the best school in DCPS in redeeming Box Tops. So keep up the great work!

Family Dinner Nights Get Results



Shepherd's first-ever Family Dinner Night in November at Crisfield Seafood Restaurant in Silver Spring netted up \$91 and change at the 15 percent rebate, but management bumped it up to an even \$100. One reason why: Our customers, by and large, were first-timers at Crisfield and they liked the food and beefed up turnout on a slow Tuesday. Crisfield wants to be a partner again next year.

At Color Me Mine, a check is on its way for \$156 after our December promotion. We keep ringing up good numbers there, even after the Nando's Peri-Peri promotion was canceled on short notice.

And at Ledo Pizza, not only did they deliver eight pizzas for last week's PTA meeting, but they brought a check for \$204 as a reward for our participation in a Family Dinner Night last month before Winter Break got started. We shall return to Ledo on Monday, June 16, during the last week of school, to ring up some even greater numbers.

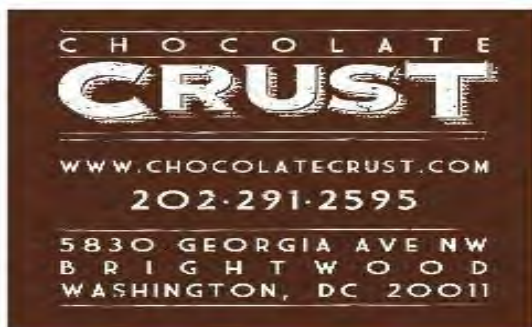
FAMILY DINNER NIGHT

FAMILY DINNER NIGHT

FAMILY DINNER



See You There!



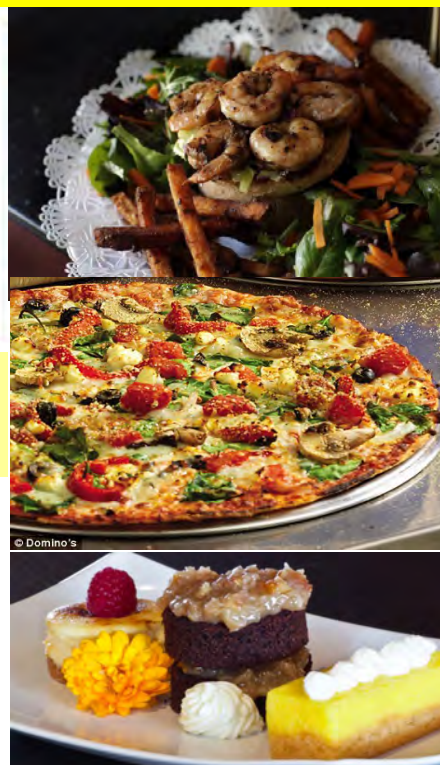
**Wednesday, February 5
7 a.m.-9 p.m.**

SAY "I'M WITH SHEPHERD"

The PTA gets 20% of your pre-tax tab!

Check out the menu!

www.chocolatecrust.com



Good for Dine-In or Curb Side Pick Up (PH: 202-291 2595) www.chocolatecrust.com

Free Movie Screening

Jan. 30 at Lowell School

Lowell School invites you to their screening of "American Promise" on Thursday, Jan. 30 from 6 p.m. to 9:00 p.m. in the school gym. This Sundance Award-winning film features the experience of two African American boys at an independent school in New York City from kindergarten through high school graduation. Read more about the film on Lowell's website: www.lowellschool.org. The event is FREE and open to the public. Register ahead: parented@lowellschool.org. This movie screening is just for adults.



Deadline for Next Mustang Issue

Fri, Jan. 3 1at 5 p.m.
Send all contributions to:

sesmustang@gmail.com

Shepherd Elementary School Mission:

At Shepherd, we are committed to the advancement of students' academic, emotional, social and physical well being. We, as a community, will provide students with a safe, supportive, creative, and flexible environment in which children think and learn globally and act compassionately.

Shepherd School Pledge

Today is a new day!
I will respect the rights of others.
I will treat all property with respect.
I will take responsibility for my learning.
I will take responsibility for my actions.
I will act in a safe and healthy way.
Today I will be the best me I can be!



Shepherd Elementary School

7800 14th Street, NW,
Washington, DC 20012
Office Telephone: 202-576-6140
Office Fax: 202-576-7578

Jamie Miles, Principal.....jamie.miles@dc.gov
Robyn Brooks, Admin. Assistant.....robyna.brooks@dc.gov
Sherilyn Pruitt, PTA President.....
PTAPresident@shepherd-elementary.org

The Mustang Newsletter Editor: Phonse McCullough, Sharlitta Nipper, Mark Pattison
Layout/Design: Keshia Pendergrast, Carmen Rush
Student Contributors: Lauren Curtis, London Downing, Zoe McCullough, Henry Trimble
Production/Distribution: Kim King, Helen & Kirk Saulny

Send your submissions for the next issue of *The Mustang* to:
SESmustang@gmail.com



Shepherd Elementary School PTA
 7800 14th Street, North West
 Washington, DC 20012-1464
www.shepherd-elementary.org

The PTA's 180 Fund

For the 2013-14 school year, EVERY Shepherd parent is in the PTA. If you are at a PTA meeting, you automatically have a vote and a voice. There are no monetary barriers to participating in the life of the school in general, [The Mustang](#), the [Shepherd Elementary website](#), and the [PTA listserv](#) will let you know how you can make Shepherd Elementary – and our children's educational experience -- better than ever.

Your Child – And Every Shepherd Student – Benefits From Your 180 Fund Contribution

But, without PTA dues, how do we pay for the things we say we want? The 180 Fund is now in its fifth year of financing school needs not covered by the school budget or D.C. Public Schools. With past contributions, we've completely outfitted the computer lab ... paid for the auditorium sound system and the tarp to cover the new gym floor ... subsidized an "afterschool academy" and paid for Discovery Communications testing analyses ... even purchased office supplies. Why a 180 Fund? Because there are 180 instructional days in the school year – a dollar a day. Can YOU afford a dollar a day per child to improve Shepherd? We think you can. Can you do more? If so, terrific! Do you need to pay on an installment plan? We've got one. Please complete this form and check the boxes:

Home address _____

Zip Code _____ Home phone number: _____

Parent 1: First and Last Name _____

Work number: _____ Cell phone number: _____

Parent 2: First and Last Name _____

Work number: _____ Cell phone number: _____

Your name(s): _____ ☐ I am a Shepherd teacher/staff member.

Email address(s): _____ ☐ Yes, sign me up for the Shepherd PTA Yahoo Group!

Phone Number(s): _____

Child(ren): _____ Grade: _____ Teacher: _____

_____ Grade: _____ Teacher: _____

_____ Grade: _____ Teacher: _____

☐ I wish to participate in the 180 Fund. Enclosed is my lump sum contribution of \$180.

☐ I wish to participate in the 180 Fund and will make two semi-annual payments of \$90 each by Sept 16 and \$90 by January 16, 2014

☐ I wish to participate in the 180 Fund and will make four quarterly payments of \$45 each by Sept. 16, Nov. 16, Jan. 16 and March 16.

☐ I wish to participate in the 180 Fund and will be able to pay semi annually \$90 by Sept 16 and \$90 by January 16, 2014.

☐ I wish to participate in 180 Fund and I would like to be exempt from Fundraising. Enclosed is my contribution of \$500.

(Please return form and check made payable to SES PTA to the PTA mailbox in the Shepherd Elementary School Office. You can also pay via credit card online at www.shepherd-elementary.org)

Float to the top of
your class with Box Tops!



Name _____

Grade _____

Teacher's Name _____

Thank you for helping! Every Box Top you collect is worth 10¢ for your school.
For more collection worksheets and projects, go to www.boxtops4education.com/activitycenter