



Shepherd Elementary School

THE MUSTANG

Home of the Shepherd Mustangs

October 24, 2011

- ♦ **Tuesday, Oct. 25:** Family Math Night, 6 p.m. (Please RSVP. See p. 7)
- ♦ **Wednesday, Oct. 26:** Family Dinner Night, Comet Ping Pong, 5 p.m.-close
- ♦ **Friday, Oct. 28:** End of first term, 12:15 p.m. dismissal
- ♦ **Monday, Oct. 31:** Halloween party, 3:15-6 p.m.; \$3 admission
- ♦ **Thursday, Nov. 10:** Loose Change Collection ends
- ♦ **Friday, Nov. 11:** Veteran's Day, no school
- ♦ **Monday, Nov. 14:** Report cards issued



Consult the school website, www.shepherd-elementary.org, for a full array of events and happenings throughout the school year!

From the PTA President...

Dear Shepherd Families,

THANK YOU!

Because of you, Saturday's Fall Fest was a success! Thank you to all of you who gave not only food, supplies and monetary donations, but also your time and your talents. Many of you chipped in where there was a last minute need. And, it is greatly appreciated. Working together, we made the Fall Fest a success! THANK YOU, again!

"Coming together is a beginning.
Keeping together is progress.
Working together is a success."

— Henry Ford

Best wishes!

Bianca Bostic

PTA President
202-821-8076

bianca.bostic@noaa.gov



A Word from Mrs. Miles!

Greetings Shepherd Family,

Curriculum Matters

This Tuesday at 6 p.m. we will have our first math curriculum night of the school year. Parents and students in grades PK-5 should make plans to attend. The first part of the meeting will be an information session for parents only. During part 1, while parents are engaged in learning, students will be participating in other activities. The second part of the meeting will be a parent and student session. Together families will participate in math games and other fun learning activities. Please arrive no later than 6. When you arrive, please report directly to the gymnasium. From there, you will receive your grade level agenda for the evening. Pizza and water will be available for students to purchase. The cost is \$1.50. Please bring exact change.



Safety Patrol

We are seeking responsible 4th and 5th graders to serve as school safety patrols. Safety patrols must be respectful, responsible and safe young men and women. Students selected must arrive to school on their assigned days no later 8:15 and be available to stay at school in the afternoon until 3:25. Safety Patrol team members will serve on a rotating basis throughout the school year. Applications will be sent home with students who are interested in joining the patrol team.

Safety

Please help us maintain a safe environment for our students. All visitors (anyone who is not a

(see MILES , page 8)



Dear Shepherd Parents and Caregivers:

This week you could have heard scissors clicking in the art room as we made "Papeles Picados," papers with tiny cuts to create Hispanic decorations for the art room, for hallways and classrooms alike. All students except Pre-K tried their hand at this and with great success! Pre-K made maracas from paper plates, so if you hear that ssshhh-sshhh-sshhh sound you'll know from whence it comes. Fourth graders continue to make progress on a figure-drawing sketchbook the drawings for which are bringing in rave reviews.

Thanks to all the parents who are seeking me out on email. My address is joele.michaud@dc.gov. Just ask around and you'll find I answer at all times of the day and night and even on weekends. I welcome any comments or concerns at any time.

--Ms. Joele Michaud, Art Teacher

Make Your Loose Change Count!

Put all that change that's weighing down your pockets and purses to good use. Give it to your child to put in their classroom's box for Shepherd's annual Loose Change collection.



You can even use the coins to teach addition to your kids. How many cents is a quarter worth? How many is a dime worth? A nickel? A penny? How many cents can your child add without getting an addition question wrong? How much will they be able to take to school that day?

Every day is a new opportunity for students to contribute to their classroom's Loose Change Collection. Half goes to the PTA to fund targeted projects, and half goes to the principal to give to needy families whose children attend Shepherd. Can we top last year's \$1,200? Yes we can!

Do you want to do more to help our kids succeed? Buy some books for the library! Feel free to donate some of your favorites, or select from the list of titles we know we need.



The Shepherd School Library has an online WISH LIST at www.amazon.com, with books that the library doesn't have. Go to Amazon, click on "Wish List" toward the right side of the page, and enter the name "Shepherd PTA" to find us. All donations are tax-deductible, and the list will grow, so check back often.

We will recognize donors in the Mustang, as well as at the school. So if you'd like to honor someone with a gift in their name, please do! Any questions? Contact us at info@shepherd-elementary.org.

--Stephanie Scott

Mustang Publication Schedule to Change

Starting in November, the Mustang will be published every other week.

The first week WITH-

OUT a newsletter will be the week of Nov. 14. Even so, each issue will be chock full of news and tips for parents and students alike. To submit items for publication, send your email to sesmustang@gmail.com.



Halloween Activities Next Week

If you're looking for a head start to Halloween fun, Ms. Christenberry's fourth graders are sponsoring a Halloween Party in the school auditorium from 3:15 p.m. (school dismissal) to 6 p.m. The cost is only \$3. Kids are guaranteed to have a good time.



Also, the Shepherd Park Citizens Association is sponsoring its annual Halloween Parade on Oct. 31 at Shepherd Field. The parade is free, and it starts at 6 p.m. sharp. The parade consists of one lap around the blue oval of the new track. Shepherd students who want to take part in the parade MUST first be released to their parents if they are in aftercare – but they can get a head start on their trick-or-treating. Copies will be distributed of houses in and around Shepherd Park that will be handing out treats that evening.



Shepherd Elementary will take part again this year in the annual "Trick or Treat for UNICEF" campaign. The Trick or Treat for UNICEF materials will be distributed this week to students. Last year more than \$300 was collected by students during their Halloween rounds. UNICEF is grateful for our support.

3 More Cell Phones or Smart Phones Needed

We are collecting cell phones and smart phones for Shepherd Elementary School. The phones are recycled and Shepherd earns money for the PTA! A minimum of 10 cell phones are needed before we can send them in - if you have an old phone, please bring it in to the PTA box in the main office. ONLY the phone please - no cords, carriers or manuals are sent to the recycling company! Thank you very much!

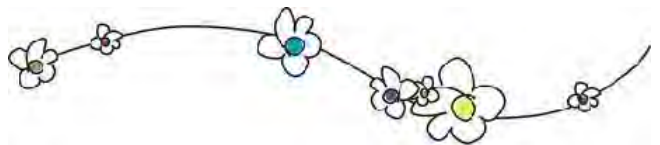


On Oct. 6, Shepherd Elementary had its first Girl Scout meeting in the library for parents and students. Ms. Pethtel, one of our kindergarten teachers, was speaking about what we should do in order to have a Shepherd Elementary Girl Scout troop. She is an adult Girl Scout, and would like to become a troop leader for Shepherd's girls.

There were about 20 students and parents who are interested in starting a Girl Scout troop. Ms. Pethtel asked us to sit in groups by grade levels to plan for our future troop. Girls in kindergarten and first grade are called Daisies, second and third graders are Brownies, and the fourth and fifth-grade students are Juniors.

There are also Girl Scout troops for students in middle school and high school. They are called, respectively, Cadettes and Ambassadors. The adult Girl Scouts, like Ms. Pethtel, can become troop leaders. I am a Junior from another troop. But I plan to participate to field trips with Shepherd's Girl Scout Junior troop.

Fellow Mustangs, like the Girl Scout slogan says, "do a good turn daily"!



If you have news tips or comments, please contact me at snherisse@yahoo.com

--Sophia-Rose Herisse, 4th grader

180 Fund Challenge Issued

Shepherd parent Sam Collins has issued a challenge to all Shepherd families to contribute to the PTA's 180 Fund: **If 10 new families sign up and contribute in the next month, Sam and his wife will contribute another \$180 themselves!** So watch your money earn BIG interest if you contribute between now and the next PTA meeting.

Sam issued the challenge because he wants 150 families – minimum! – to sign up for the 180 Fund, and for those who have made pledges to make good on their pledges. "It's a half a buck a day for all year round," he said at last week's PTA meeting, and everybody should be able

to afford that. "Are you the kind who buys coffee every day?" he asked in his presentation. It doesn't take a wholesale change in priorities to find \$180 in your budget.

Private school tuition around D.C. runs \$20,000-\$30,000. D.C.'s public schools get, maybe, \$10,000 per student. Our public schools do a "fantastic" job making those education dollars stretch, but it's never enough. And \$180 is a lot cheaper than \$20,000.

Sam alluded to the shtick from a year ago where parents contributing \$500 had the monetary equivalent of a force field surrounding them and insulating them from future fundraising pitches from the PTA. He added that he didn't know his times tables all the way up to 180, but $150 \times \$180 = \$27,000$. And that's impressive.

Do your part! And do it now! Make Sam pay! You can go to <https://www.shepherd-elementary.org/180fund/> and make your contribution online. You can also go to <http://www.shepherd-elementary.org/support-us/180-fund/> and click on a copy of the contribution form to print, fill out and return with your check to the PTA box in the school office.

FAMILY DINNER NIGHT • FAMILY DINNER NIGHT



Comet Ping Pong
5037 Connecticut Ave, NW
(at Nebraska)
Free parking in rear
Wednesday, Oct. 26
5 p.m. - close

- *Ping Pong for the kids (and adults!)*
- *Great pizza for the kids (and adults!)*
- *Great salads and desserts for the kids (and adults!)*
- *Great micro-brewed beer (for the adults only!)*

SAY "I'M WITH SHEPHERD"

AND the PTA gets a
20% rebate from
your pre-tax tab



**This offer good for BOTH dine-in AND carry-out
(Place orders at 202-364-0404)**



'Bee' a Good Speller!

The PTA has paid the \$120 entry fee to compete in the annual Scripps-Howard Spelling Bee. In recent years, the finals have been held here in Washington and televised nationally on either ESPN or ABC. Maybe one of our students will emerge as a champion!



Mini-Walk for the Homeless is Wednesday

For 10 years, Shepherd's students and teachers have participated in the Fannie Mae Mini-Walk for the Homeless. From year one, Shepherd's partner in the walk has been Hope and a Home, which provides housing and family services and support to single parents and their children. At the same time, Shepherd has conducted a food collection drive for Shepherd's Table, which provides wide range of service to the homes in Silver Spring. Donation boxes are outside the school office, the auditorium, and inside classrooms for Shepherd's Table.



At last week's PTA meeting, June Confer, Shepherd's business manager – and walk coordinator – said the highest rate of participation has been 93%. This year, she said, she wants to make it a 100% participation year. Every child who returns a signed participation form will receive a T-shirt, and Hope and a Home will receive a contribution from Fannie Mae of about \$15. Fannie Mae also waives the registration fee for all students in the D.C. Public Schools system.

This year's Mini-Walk for the homeless will take place on the afternoon of Wednesday, Oct. 26. Representatives of Hope and a Home will present an awareness program in the auditorium. Students will walk around the new blue-oval track at Shepherd Field next door to the school. Your own child may, during the walk, be carrying a sign expressing his or her own wish to help the homeless.

Permission slips were sent home in backpacks last week. If you didn't return it yet, do so NOW so we can get to 100%. If you can't find it, extra copies are at the school office.

A Thank You to our Teachers and Aides

Each year, the PTA distributes stipends to our teachers, who all too often have had to pull out money from their own pockets to furnish their classrooms with the necessary supplies to educate our children. Last year, the PTA added teachers' aides to the list. This year, the stipends are taking the form of gift cards to thank our teachers for their unceasing efforts. This money comes from your contributions to the PTA's 180 Fund. To date, reports PTA treasurer Kim Barnette, \$3,650 in gift cards has been distributed to our educational staff. We can support our teachers with our thanks and a little bit of money – and we can support our PTA in the same way!



BOX TOPS ARE TOPS!

Yes, Shepherd, we are still collecting Box Tops for Education! You don't even have to wait to fill up a completed Box Tops Collection Sheet to contribute. Just put your clipped Box Tops into a Ziploc-style sandwich-size bag and include your child's name, teacher and grade. The last step is to put them into the Box Tops Box in the school office!



Shepherd's Due for Renovations!

At last week's PTA meeting, Nancy Huvendick, a representative from the 21st Century School Fund, outlined plans that the District has to renovate Shepherd. It would be a three-stage process. The first stage is likely to take place in 2013, and the second in 2017. The third phase has not been set because the budget is projected for only six years, but it is likely to take place in 2019.



All renovations would take place during summer vacation, so that no school activities are disrupted. However, the dates of each phase are subject to annual adjustments – such as what happened last year when the Takoma Educational Campus caught fire over winter break, requiring \$12 million in repairs that had to come from the renovation budget.

It turns out that Ward 4 was at the bottom of the city's eight wards in terms of capital spending for 2007-09, and was scraping near the bottom (sixth of eight) in 2006-07 dollars. However, parents are invited to visit Truesdell Elementary in Ward 4 for a nearby example of what renovation can do for a school. A little further away, Tubman Elementary in Ward 1 also provides a good example, according to Huvendick.

Shepherd will assemble a School Improvement Team consisting of school personnel, parents and Shepherd Park neighbors to determine the most immediate needs for renovation. The team would work with D.C.'s General Services Agency, which is now responsible for all school renovation planning.

For an effective School Improvement Team, Huvendick said, look for architects, engineers, administrators and school personnel. They'll define the problems, and then ask architects for solutions.

Half-Day Friday

This coming Friday, Oct. 28, is a half-day for students. School lets out at 12:15 p.m. There will be NO aftercare for students that day, so please make arrangements to pick up your child when the school day ends.

Shepherd School Pledge



Today is a new day!

I will respect the rights of others.

I will treat all property with respect.

I will take responsibility for my learning.

I will take responsibility for my actions.

I will act in a safe and healthy way.

Today I will be the best me I can be!

DON'T



FORGET

**Register Your
Giant Card for
A+ Bonus Bucks**

You must register your Giant card every school year for the A+ Bonus Bucks Program. If you haven't done so already, go to https://www.giantfood.com/our_stores/bonus_bucks/designate_school.htm?execution=e2s1 or call the A+ School Rewards Hotline at 1-877-ASK-APLUS (1-877-275-2758) and register yours today for the 2011-12 school year! Be sure to designate Shepherd Elementary School. **Shepherd's A+ Bonus Bucks Code is 00154.**



Family Math Night is Tuesday

Remember: Family Math Night is this Tuesday, Oct. 25. The event will begin at 6 p.m. and will end at 8 p.m. Parents are encouraged to bring their children. There will be pizza and water for sale for the students. All grade levels are encouraged to be in attendance.

During the first part of the meeting, parents will be in an assigned location learning about math on their child's grade level. Afterward, parents and students will reconnect to participate in fun math games and activities. Students in attendance will be with an assigned special area teacher during the first part of the meeting, and they will be engaged in math activities as well.

Use the RSVP form below and send it to the school quickly!

Door Corps

To make sure that security is not – and won't be – a problem at Shepherd, the principal wants the auditorium doors closed at 8:40 a.m. That's for starters.



But to help keep Shepherd secure, one parent has volunteered to head up a "Door Corps" of parents who will ensure that the doors are shut when they're supposed to shut – and that they stay shut.

If you'd like to join the Door Corps, get in touch with Ed Walden at e.waldenjr@fidofitnessandplay.com, or call him at 202-607-0474.



Tues, Oct. 25

Parent(s) Name(s): _____



I/We will be attending Math Night with my/our student(s).

Number Attending: Parent(s) _____ Student(s) _____

Please cut out and return to school as soon as possible.

MILES _____ from p. 1

Shepherd staff member) must check in at the security desk and receive a visitor's pass before reporting to any part of the building beyond the gymnasium. You do not need a pass to wait in the gymnasium during dismissal and arrival. learning at home. If not, please let your teachers know.

When visiting the school, please have your ID present in case there is a new guard on post. The security guard is required to check ID; however, once she gets to know you and your face she most often will not ask you to present ID.

If your child is eating breakfast parents may enter the cafeteria door adjacent to the playground. During arrival and dismissal parents may enter the building via the gymnasium doors. However, during all other times, parents should only enter the building through the Jonquil entrance (main entrance) and exit the building via Jonquil or Kalmia. Limiting our entrance and exit doors will help keep our exterior doors secure. If you happen to be in the building and see a door that is not secure, please secure the door by closing the door.

We Welcome You

Parents are welcomed and encouraged to visit their child/teacher/classroom but we ask that you visit with a purpose. Here are some purposes: volunteering, scheduled conference with your child's teacher, scheduled classroom observation (scheduled directly with teacher, Ms. Liggins, or Principal Miles), lunch with your student or a surprise visit during recess. We currently have a lot of extra traffic in the building and this traffic is a distraction to students and staff. If you have something that needs to be delivered or you have a message for your child, their teacher or any other staff member, leave it with Mrs. Brooks or whomever may be assisting in the main office.

We Are Family

Please be respectful to our students, their rights, their needs and the needs of their families. At Shepherd we are striving to create an inclusive and respectful learning environment where all families feel safe and welcome. We all look different, come from different places, believe in different things and have different life experiences. It is these differences that make our world an exciting place. It is these differences that make Shepherd a great school. I often refer to our Shepherd community

as family, a group of people held together by bonds of love and affection. Let's strive to watch our words and our actions because we never know how it may impact one of our family members.

Have a great week!

Warmest regards,

Jamie Miles

Principal

Shepherd Elementary School Mission:

At Shepherd, we are committed to the advancement of students' academic, emotional, social and physical well being. We, as a community, will provide students with a safe, supportive, creative, and flexible environment in which children think and learn globally and act compassionately.



**Newsletter
DEADLine**

**Fri, Oct 28,
at 5 p.m.**

**Deadline for
Next Mustang**

Send all contributions to:
sesmustang@gmail.com

Shepherd Elementary School

7800 14th Street, NW,
Washington, DC 20012
Office Telephone: 202-576-6140
Office Fax: 202-576-7578

Jamie Miles, Principal – jamie.miles@dc.gov
Robyn Brooks, Admin. Assistant – robyna.brooks@dc.gov
Bianca Bostic, PTA President

The Mustang Newsletter Editor: Mark Pattison

Layout/Design: Yolonda Walden

Production/Distribution: Angela Anderson

Student Contributor: Sophia-Rose Herisse

Send your submissions for the next issue of *The Mustang* to:
SESmustang@gmail.com