



Shepherd Elementary School

THE MUSTANG

Home of the Shepherd Mustangs

Friday, February 6, 2009

Mark Your Calendars!



Thru 2/13 – New Parent School Tours

2/9 – Auction Kickoff Meeting, 6:00 pm, SES Library

2/11 – Prospective Parent Open House, 9:30-11:00 am

2/11 – Songs of Freedom dress rehearsal, 6:45 pm

2/12 – Songs of Freedom public concert, 6:45 pm

2/16 – Presidents Day – No School

2/18 – PTA Meeting, 6:45 pm, SES Auditorium

2/27 – Parent-Teacher Conferences – No School

January PTA Meeting Highlights: 'This Time It's About the Money'

The tone was somber yet hopeful during the January 29 PTA meeting at which PTA finances were the prime topic of discussion.

PTA president Earl Yates noted how Shepherd Elementary parents have continued to be generous with their time and their talents, but "this time it's about the money," he said.

The PTA is about \$10,000 below its income expectations for the 2008-09 school year, according to a report delivered by PTA treasurer Doug Noble. A significant majority of the shortfall can be traced to less-than-expected income from the Family Enrichment Fee, he said. The Reader's Digest fall fund-raiser also fell \$4,000 short of expectations, and even the savings realized from donated food for the Friday morning parent coffees and higher-than-expected revenue from the Fall Fest cannot make up for the shortfall. The shortfall means that PTA-funded educational initiatives may have to be curbed if the PTA does not have the money to continue paying for them.

Parents at the meeting brainstormed ways to spur more PTA membership. The husband-and-wife team of Marcus Hall and Leonie Stephenson will head up a midyear membership outreach campaign.

The meeting was rescheduled first from January 21 in expectation of post-inaugural hangovers, and then from January 28 in the fear of more bad weather like the freezing rain of that morning.

A Word from Mrs. Miles!

Happy Friday!

I hope each of you had an excellent week and I also hope your student(s) was (were) able to share at least two things they learned and two positives things about their school week. We are steadily moving forward in a positive direction and your students continue to make great things happen daily. Thank you for all you do!

Mr. Seaward

I want to take a moment to introduce you to Mr. Rembert Seaward. Mr. Seaward started in our building last Thursday and will continue with us until I return from maternity leave. This is Mr. Seaward's third school this year, and already he has made himself right at home. He attended last week's Grade Level Parent meeting, and he has been assisting teachers and addressing their instructional needs. We are glad he is here and I know he will continue to be an invaluable resource while I am away.

I am tentatively scheduled to go out on maternity leave beginning Friday, March 13, 2009. Our daughter's due date is March 16th or somewhere around that time. I plan to return after spring break before spring testing. I will keep you updated.

Next Year

Many of you have asked what will things look like next year in terms of staffing and the number of classes. Currently, I do not have any definite answers. However, throughout the month of February, and continuing through March, I will have more answers. I will provide you with updates as I receive them. Thank you for your patience.

(See Principal, continued on page 2)

Inclement Weather School Status Update Resources

AM Radio	FM Radio	Television	Website
<ul style="list-style-type: none">• WMAL (630)• WOL (1450)• Radio America, Spanish (1540)• WTOP (1500)	<ul style="list-style-type: none">• WAMU (88.5)• WTOP (107.7)• WHUR (96.3)	<ul style="list-style-type: none">• Channels 4, 5, 7 and 9• Cable Channels 8, 16 and 28	www.k12.dc.us on the homepage

(Principal, continued from page 1)

Parent Meeting

Thank you to everyone who attended last week's PK-2nd Grade Level Parent meeting. We had nice turn out and I think the parents walked away with a better understanding of what strategies teachers are using in the classroom to help our students be more successful in reading and math while increasing their critical thinking skills. Now that everyone has had the opportunity to learn more about the strategies we are using, please continue to be on the look-out for Wednesday night CR homework. Grades 3-6 are moving forward nicely. Second grade is just getting started, and students in grades PK-1 are in preparation.

Due to February being a short month and the many events scheduled throughout, we will not be having February Grade Level Parent meetings.

Volunteers Needed

This spring we would like to host another Scholastic Book fair. However, this may not happen if we do not have volunteers. Volunteers are needed to assist with set-up, sales, and pack-up. If interested, please contact Ms. Scinto at (maria.scinto@dc.gov).

(Continued next column)

Pancakes

Later this month, we will be hosting a Kiwanis Pancake Breakfast. The Pancake Breakfast will be held on Saturday, February 28, 2009 from 8:00 am-12:00 noon. Tickets are \$6.00 for all the pancakes you can eat. Monies raised will help support community service projects. A small percentage of the monies will be donated back to the school to help fund school projects. What can you do? We are asking each family to donate one box of Aunt Jemima (just add water) pancakes. We will begin collecting pancake mix on February 9th. Pancake mixes can be sent to school with students or dropped off in the front office.

Deal Night at Shepherd

On Tuesday, February 24th we will be having Deal Night at Shepherd in the school auditorium. The forum will begin at 6:00 pm and will last for approximately 40 minutes to an hour. Students in grades 4th – 6th and their parents are invited to attend to learn more about the excellent opportunities available at Deal Middle School.

Enjoy your weekend,

Mrs. Miles

Auction Volunteer Kick-Off Meeting

Come one, come all to the auction volunteer kick-off meeting to be held Monday, February 9th at 6:00 pm in the school library. This will be a brief meeting to discuss the timeline, opportunities to participate, and learn more about how important the auction is to the PTA's ongoing efforts and financial support at the school. Plus, you'll get to know other parents and feel even more included in our close Shepherd Elementary family! Questions: Chantale Swanson - swanprncess75@aol.com or Marnie Keller - marniekeller@gmail.com. We look forward to working together to put on a successful and fun-filled auction event!

PTA[®]



JOIN TODAY!

Many Faces - One Vision

The PTA Pizza Party Challenge

One parent, eager to see the PTA fulfill its mission of helping provide quality education at Shepherd, signed up all the non-member parents with children in Mr. Byers' kindergarten class. That brings the total to 18 from one classroom – 100 percent participation! That calls for a PTA-funded pizza party for Mr. Byers' class later this year.

The challenge is on. Can YOU get 100 percent PTA membership in your child's classroom? The time to act is now, and the need has never been greater. You can get each family to join individually, or you sign up a whole bunch of parents yourself.



PTA membership applications are on the rack in the main hallway next to the office. For a capsule summary of what the PTA does, there is a one-sheet PTA mission statement, also in the rack near the office.

Shepherd PTA – join today!

Songs of Freedom and Justice Concert Tickets Going, Going...



... almost gone! At \$5 each, they are a great deal to watch your children and their classmates tell U.S. history through song. With 80 speaking parts, 30 prominent U.S. characters portrayed, and 25 songs to be performed, it is a show not to be missed!

The show is next Thursday, February 12, starting at 6:45 p.m. in the Shepherd Auditorium. You

must have a ticket to enter. And it is highly unlikely that any tickets will be available at the door.

Ticket sellers include the following Shepherd parents: Cara Biddle, Lisa Deane, Charisse Brossard, Judith McCullough, and Mark Pattison. The main office still had tickets for sale as *The Mustang* went to press and may have some left by the time you read this. Contact Mark at 829-9289 for tickets.

Also, consult the PTA's listserv about ticket availability. If tickets are sold out, parents are welcome to come to a free dress rehearsal of "Songs of Freedom and Justice" to be held Wednesday, February 11, also at 6:45 p.m.



Both the dress rehearsal and the live show will be recorded for a CD. You can order CDs at \$10 each (plus a \$5 shipping fee if you want them mailed to you – or free shipping if you trust your kid to deliver it via the backpack route) right now for a projected delivery in April. CD order forms are in the rack by the main office. It's not too late to start thinking about Mother's Day, Father's Day, Grandparent's Day, birthdays and other holidays – even the ones in December!

Don't be Late for After Care

This past Monday, the STAR ACHIEVERS Before and After Care program began a new policy of collecting late fees for parents who pick up their children after the 6:30 p.m. pick up time.

Any late charges (\$3 per minute) will automatically be added to the parent's monthly payment. In addition, this is a reminder that monthly payments are due the 15th of each month. The annual after-care payment must be paid in full by April 15.

For questions concerning your STAR ACHIEVERS account, please contact Mr. Huff at 301-699-9266



AUCTION NEWS!

The theme of this year's Shepherd Elementary School auction fundraiser is "Spotlight on D.C. Excellence, Past, Present, and Future." Count on a lot of great things to be spotlighted, both on and off the auction floor.

The auction will again be held on the campus of Howard University. While the exact date has not been determined, a date sometime in late May is likely.

Get on board the Auction Committee right now by contacting either of our two Auction Committee co-chairwomen:

Chantale Swanson (Co-Chair) – swanprncess75@aol.com
Marnie Keller (Co-Chair) – marniekeller@gmail.com



PTA Partnership with SCORE!

The Shepherd PTA has partnered with SCORE! Educational Centers. Through this partnership, families of Shepherd students will have more available tutoring and study skills development choices. The school's families will qualify for significant savings on tutoring and study skills development services. Based on participation, the partnership can generate SCORE! financial contributions to the PTA for its on-going support of school activities.

SCORE! Educational Centers is a learning services company that utilizes face-to-face and on-line tutoring approaches that feature: customized learning plans; blended learning - integration of in-Center tutoring sessions and on-line learning; unlimited access to SCORE!'s online curriculum, with more than 1000 hours of instruction; real-time online progress reports; and proven motivational techniques to promote self-confidence.

The participating SCORE! Center is in the Columbia Heights community, at 14th and Columbia Road N.W. Detailed information on the programs, and their costs, that SCORE! will offer to Shepherd School families, under the "Learn and Earn Agreement," can be obtained by calling the Columbia Heights Center at (202) 232-3437.

Forms and other information on enrollment is available in the Shepherd school office.



Shepherd IB-PYP Corner Goals for February

Update:

In our journey toward IB authorization, our goals this month are to produce a relevant and structurally accurate Programme of Inquiry (POI) that we will consider a working draft until next fall, to help students to develop a firm understanding of at least four of the ten Learner Profile attributes and to produce one complete PYP planner on each grade level.

Consequently, our major activities for February are as follows:

1. Grade level teacher teams will continue to collaborate on constructing their units of inquiry.
2. The full faculty will continue to collaborate on refining the school's Programme of Inquiry (POI).
3. Classroom and special subject teachers will introduce the Learner Profile attributes to students on all grade levels.
4. Grade level teams will develop a first draft of the complete PYP planner for the unit of inquiry that will be implemented during the last six weeks of school.

PYP Lesson of the Week: The Key Concepts

Each PYP unit of inquiry has a central idea (the broad or big idea of the unit), three to four lines of inquiry (subsections of the unit that are topics students will inquire into) and three "key concepts" that students should acquire through doing the unit. There are eight possible key concepts. They are listed here with the "key question" that arises from the concept.

1. Form – What is it like?
2. Function – How does it work?
3. Causation – Why is it like it is?
4. Change – How is it changing?
5. Connection – How is it connected to other things?
6. Perspective – What are the points of view?
7. Responsibility – What is our responsibility?
8. Reflection – How do we know?

The developers of the PYP program selected these eight concepts because they believed that this set of concepts has universal significance within and across all of the disciplines, regardless of time or place. Furthermore, in their research of several different curriculums, they found that these concepts stood out.

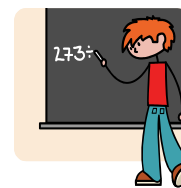
Questions for reflection and discussion:

If you were asked to choose two or three of the ten Learner Profile attributes that describe you best, which two or three would they be? (Remember that the attributes are: inquirers, knowledgeable, thinkers, communicators, principled, open-minded, caring, risk-takers, balanced, reflective.) Think about why you chose those attributes. Now ask someone else to select attributes that describe you. Did their choices match yours?

~ Patricia L. Tucker & Jamie Miles

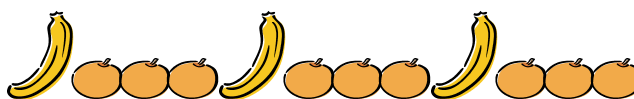


Math Challenges



Primary Math Challenge:

Zoey is using bananas and oranges to make the pattern shown below. The rule for her pattern is ABBB.



Zoey will follow the rule for her pattern a total of 4 times.

How many oranges will Zoey use in all?
Show or explain how you got your answer.

Intermediate Math Challenge:

Evaluate the expression below if $x = 4$.

$$3^3 + (2x + 10)$$

Show and explain your work.

Trivia Corner — Just for Fun!

Each week students will be asked a trivia question. Students should place their name and the answer to the trivia question in the trivia box located outside the cafeteria door. On Tuesdays, one lucky winner will be selected to receive a special treat. Answer this week's trivia questions by Tuesday.

Trivia Question:

What African American is famous for inventing the traffic light?



Answer to last week's trivia question:



What is: $111,111,111 \times 111,111,111$?

Answer: 12,345,678,987,654,321

CONGRATULATIONS to last week's trivia contest winner: Christopher Saulny!

Literacy Corner

The newspaper is a great tool for teaching and learning. It has been called the living textbook and it lives up to that name. This is because news develops every day. The newspaper can be used to enhance skills in reading, writing, listening, speaking, math, social studies and science. So, use the newspaper at home to help enhance your child's skills. Try the scavenger hunt below.



Searching the Paper

Skill: Effectively skim and scan for information.

Have your child find each of the following in the newspaper:

- someone wearing glasses
- map
- animal
- television listing*
- the name of your city*
- athlete
- action word (verb-something you do)*
- television star
- cartoon
- story about another country*
- Letter from a reader*
- movie review or ad*

You may want to discuss the context in which you have discovered these items. (* Primary students will need assistance with these items.)

Family Enrichment Fee Parents Get Deserved Nod

We raise our glasses in honor of PTA parents who have contributed toward the PTA's Family Enrichment Fee. Despite the resources D.C. Public Schools has put into the system – look at the long-awaited installation of windows, and the recent start of the Saturday Language Academy, to name but two examples that apply to Shepherd – there are some things that DCPS doesn't include in its budget. These include, among other things, Shepherd's math tutor, Ms. Noel, and the French language aide, Madame Agoussi. Contributing to the Family Enrichment Fee is the only way we can guarantee that they – and other PTA-funded initiatives at Shepherd – will be here through the entire school year.

The PTA Family Enrichment Fee is \$500. Some parents have paid the full fee already, while others are paying the fee in installments. We encourage you to follow the example set by the parents listed below, and contribute as much as you can toward the Family Enrichment Fee. Our students, and our school, will be better off once you do. In the meantime, let's salute these parents who have made the commitment to their children's education in an extra-special way.

We urge you to join this growing group. Write your check to "Shepherd Elementary PTA," write "Family Enrichment Fee" in the memo line, put the check in an envelope and deposit the envelope in the PTA box in the school office. You'll be glad you did!

Contributors to the Annual PTA Family Enrichment Fee

If your name is not on this list and you have paid all or part of your annual Family Enrichment Fee for SY2008-2009, please contact PTA Treasurer Doug Noble.

Mrs. Gibbs – Pre-K
Michael and Felicia Williams

Ms. Holt – Pre-K
Changamire and Angela Anderson
Shawn and Wanda Jenkins
Fred Lewis and Sarah Potter
Douglas and Laura Noble
Anastasia Norton and Matthew Scherer

Ms. LaPenna – Pre-K
Victoria Botvin and Darren Dorkin
Guyton Harvey and Donna Johnson-Harvey
Nick and Marnie Keller
James and Nomi Montgomery
Larry and Vanessa Smith
David and Katherine Trimble

Mr. Byers – Kindergarten
Marci Bane and Mike Imbroscio
Kim and Corey Barnette
Ashford and Lisa Connor
Daryl and Lynette Jones
Yasmin Lewis-White
Jay and Lori Matthews
Mark Pattison and Judith McCullough
Nicole and Andrew Reece
Warren and Amber Romine
Earl Yates and Kristin Wells

Ms. Kuawogai – Kindergarten
Penny and Daniel Gerber
Carol Mulholland
Susan Perez and Nathan Smith
Nathan and Catherine Stratton Treadway
Bill Wilson

Ms. Miller – Kindergarten
Bill Wilson

Mrs. Crockett – First Grade
Gina and Kelvin Carvana
Anthony and Kimberly Harrison
David and Katherine Trimble

Mrs. Kinsler – First Grade
Laurent Gonnet
Syafrida and Hussein Hasan
Sabine and Rockefeller Herisse
Timothy Smith and Rhonda Davis Smith

Ms. Johnson – Second Grade
Mario and Charisse Brossard
Lisa Deane
Leš Melnyk and Stephanie Scott
Douglas and Laura Noble
Charles and Alzata Ross
Jessica and Lovell Saunders

Ms. Thurber – Second Grade
Rose and Calvin Dawson

Ms. Chambliss – Third Grade
Changamire and Angela Anderson
Cara and Sekou Biddle
Laurent Gonnet
Leš Melnyk and Stephanie Scott
Timothy Smith and Rhonda Davis Smith
Larry and Vanessa Smith
Earl Yates and Kristin Wells

Ms. Thomas – Third Grade
Jay and Lori Matthews

Ms. Valentine-Nelson – Fourth Grade
Guyton Harvey and Donna Johnson-Harvey
Jack and Juliet Markand

Ms. Ulba – Fifth Grade
Daryl and Lynette Jones

Mr. King – Sixth Grade
Jack and Juliet Markand

Other Contributors to the FEF
D.N. Bocian
Heather and Corey Langille
Michael Lewandowski

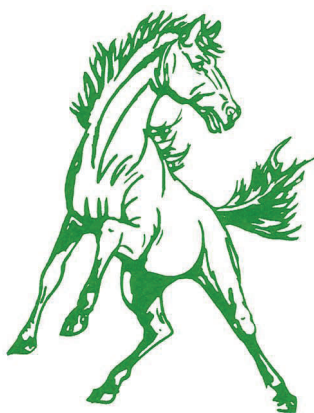
We Salute the PTA Parents

All too often, we complain about what we DON'T have and rarely spend time thanking our lucky stars for what we DO have. And what we DO have with the Shepherd PTA is a terrific group of parents. They have, obviously, given their money to support the PTA and Shepherd's educational mission, but they have also contributed much of their time and their talent. The PTA is as successful as it is because of the efforts of its members, and they deserve a lot more recognition even than what they're getting here in *The Mustang*.

At right is a roll call of one of the most honorable honor rolls in our city:

You can join this fine group of parents. We'll list new names – every week if new members join every week – in the Mustang. Your PTA dues of \$50 supports the PTA, which supports the school regardless of whether the waters are smooth or rocky. There are PTA membership applications in the rack near the main office. Complete the form, put in your \$50 check made out to "Shepherd Elementary PTA" and put it in the PTA box in the office. Your support is needed now more than ever. Help us support our children by supporting the PTA! We need the support of ALL Shepherd families to do right by our children!

If your name is not on this list and you have paid your PTA membership dues for SY2008-2009, please contact PTA Treasurer Doug Noble.



Welcome New Members!

We welcome our most recent members who have joined the PTA since we initiated our "Obama Challenge" in January –the reduced membership rate to spur PTA membership to coincide with the new president's inauguration.

Paid PTA Members, SY 2008-2009

Mrs. Gibbs – Pre-K

Anyatonwu Chijoke and Marquita Davis
Jean Hoff
Michael and Felicia Williams

Ms. Holt – Pre-K

Changamire and Angela Anderson
Marcus Hall and Leonie Stephenson
Shawn and Wanda Jenkins
Fred Lewis and Sarah Potter
Douglas and Laura Noble
Anastasia Norton and Matthew Scherer
Stuart and Nicole Peacock

Ms. LaPenna – Pre-K

Victoria Botvin and Darren Dorkin
Marcus Hall and Leonie Stephenson
Guyton Harvey and Donna Johnson-Harvey
Nick and Marnie Keller
Tabitha McNeill
James and Nomi Montgomery
Kirk and Helen Saulny
Larry and Vanessa Smith
David and Katherine Trimble
Lawanda Tyus

Mr. Byers – Kindergarten

Marci Bane and Mike Imbroscio
Kim and Corey Barnette
Ashford and Lisa Connor
Sharon Jackson and Thomas Bowman
Daryl and Lynette Jones
Yasmin Lewis-White
Jay and Lori Matthews
Mark Pattison and Judith McCullough
Nicole and Andrew Reece
Warren and Amber Romine
Earl Yates and Kristin Wells

Ms. Kuawogai – Kindergarten

Hollie and Graciela Carter
Tatiana Escobar
Penny and Daniel Gerber
Carol Mulholland
Susan Perez and Nathan Smith
Nathan and Catherine Stratton Treadway
Chantale Swanson
Leonard and Magda Taylor
Bill Wilson

Ms. Miller – Kindergarten

Timothy Davis and Celita Lewis Davis
Jean Holmes
Bill Wilson

Mrs. Crockett – First Grade

Hardy Bennett and Iris Ruffin-Bennett
Roy and Sylvia Brinkley
Gina and Kelvin Carvana
Jaye Jones-Muhammad and Ali Muhammad
Anthony and Kimberly Harrison
Mark and Patsy-Ann Rasmussen
Frank and Natika Sheffield
David and Katherine Trimble
Belinda Whittle

Mrs. Kinsler – First Grade

Jameelah Abdulmateen and Awad Morgan
Tony Clark and Donna Grigsby
Laurent Gonnet
Syafrika and Hussein Hasan
Sabine and Rockfeler Herisse
Jean Hoff
Dexter and Gloria Jennings
Adam Kane
Jason and Sherri Keene
Timothy Smith and Rhonda Davis Smith

Ms. Johnson – Second Grade

Shantelle and James Ballard
Mario and Charisse Brossard
Lisa Deane
Leś Melnyk and Stephanie Scott
Douglas and Laura Noble
Tatrina Parker
Charles and Alzata Ross
Jessica and Lovell Saunders

Ms. Thurber – Second Grade

Robin and Steven Bennett
Rose and Calvin Dawson
Vanessa Jackson and Alvin Brown
Stephen Leonard and Kimberly Jeffries-Leonard
Daryl and Niki Mitchell
Mireille Touaboy

Ms. Chambliss – Third Grade

Changamire and Angela Anderson
Cara and Sekou Biddle
Frank and Jill Borris
Barbara Davis-Sewell
Laurent Gonnet
Leś Melnyk and Stephanie Scott
Timothy Smith and Rhonda Davis Smith
Larry and Vanessa Smith
Earl Yates and Kristin Wells

Ms. Thomas – Third Grade

Mark Banks
Sandra Corbett and Alvin Johnson
Charles Epps and Lisa Epps Haley
Jay and Lori Matthews
Caroline Vaughn-Cooke

Ms. Valentine-Nelson – Fourth Grade

Thomas Black
Barbara Davis-Sewell
Guyton Harvey and Donna Johnson-Harvey
Jack and Juliet Marrkand
Belinda Whittle
Kim and Ronald Williams

Ms. Gilmore – Fourth Grade

Timothy Davis and Celita Lewis Davis

Mr. Leonard – Fifth Grade

Roy and Sylvia Brinkley
Barry Hudson and Robyn Cohen-Hudson
Marc and Jennifer Loud
Jessica Prentice
Angela Thornton
Ms. Ulba – Fifth Grade
Hardy Bennett and Iris Ruffin-Bennett
Daryl and Lynette Jones
Marc and Jennifer Loud
Lawanda Tyus

Mr. King – Sixth Grade

Shantelle and James Ballard
Athena Cross-Edge
Angela Gross
Donnell and Yvonne Jones
Jack and Juliet Marrkand
Ann and John Morgan
Kirk and Helen Saulny
Chantale Swanson
Marie Terrell

Shepherd Faculty/Staff

Dee Dee Chambliss
Ken Giles and Davida Perry
Margaret Hayes-Noel
Diane LaPenna

Other Paid PTA Memberships

D.N. Bocian
Heather and Corey Langille
Michael Lewandowski

Culture Shop Donates 20% Of Shepherd Purchases Feb. 6-8

Go, go, GO to the Culture Shop at 314 Cedar St. NW at Blair Rd. NW, a half-block from the Takoma Metro station, this weekend. Mention Shepherd Elementary when you make your purchase, and the Culture Shop will donate 20 percent of your purchase price to the PTA! This terrific offer extends all weekend. The Culture Shop's hours are 11 a.m.-7 p.m. Friday, 11 a.m.-6 p.m. Saturday, and 11 a.m.-5 p.m. Sunday.

The Culture Shop carries, among other things, Obama inaugural memorabilia, pottery and baskets, tableware, recycled products, biodegradables, bath and body care items, apparel and accessories, books and stationery, home and garden items, jewelry, and global artifacts. There is also a Kid's Corner inside the shop, and a cafe so you can sip a coffee while deciding what you want to buy.

Another plus: The Culture Shop is a fair-trade retailer, promoting "social and economic progress of talented artisans in developing countries by marketing their products in a fairly traded manner." The store partners with both Teaching for Change and with Co-Op America.

One incentive for you to stop by: The Culture Shop's 3rd Annual "Affair of the Art," to be held 2-5 p.m. Sunday, featuring organic chocolate, the exotic sounds of world music, an array of international wines, and local artists currently exhibiting at the store.



Samplings from Divine Chocolate, the world's first and only farmer-owned cocoa-producing cooperative in Ghana, as well as Sweet Earth Organic

Chocolates, a fair-trade chocolatier working with farmers in the Dominican Republic, Costa Rica and Peru, will be available for tasting.

If you buy online at www.cultureshop.com, go to the "comment" space. If you type "Shepherd Elementary" in the comment space, the PTA will get its 20 percent bonus. So tell your Aunt Sherry in Charleston and Uncle Charlie in Rochester to buy online and include the magic words "Shepherd Elementary." And the bonus for you: The online store has even more goods than the shop itself in Takoma could ever have room to stock.



Spread the Word!

Open Houses for Prospective Shepherd Parents

Shepherd Elementary School's Open House is scheduled for February 11, from 9:30 am to 11:00 am. There will be a brief information session, followed by a Q&A and building tour.



Building Tours for Prospective Shepherd Parents

Building tours for prospective parents continue through the second week in February (February 13). Tours will be held every half hour on Tuesdays and Thursdays from 9:00 am - 11:00 am. These tours are for parents who are unable to attend the Open House but would like to tour our facilities. Prospective parents must call the school at 202-576-6140 to schedule a building tour.

If you are a parent interested in providing potential parents with a guided tour, please send an email to Ms. Brooks at robvna.brooks@dc.gov or call her at 202-576-6140.

Past Issues of The Mustang are Online

Would you like to read *The Mustang* electronically? Need to refer back to a past issue? Each week, *The Mustang* is uploaded to the files area of the PTA listserv. Join the listserv and click to read.

http://groups.yahoo.com/group/Shepherd_Elementary_PTA/files/%22The%20Mustang%22/

Have YOU joined the Shepherd PTA yet??

PTA[®]
everychild.onevoice.

The Mustang is for Parents & Kids!

Hey Parents: Be sure to share the activity sections of *The Mustang* with your children each week. You can help your children work through the fun and educational activities featured in each week's *Mustang*. These activities are based on DCPS standards.



And don't forget to have your kids answer the weekly Trivia question! Winners names will be published here in *The Mustang*.

Community Events

Winterfest Children's Carnival

The Learning Center for Young Children will host its 19th annual Winterfest Children's Carnival on Saturday, February 7. The event will be held from 10 a.m. to 2 p.m. at the Warner Memorial Presbyterian Church, 10123 Connecticut Avenue in Kensington. This family-friendly event will feature acclaimed local entertainer Frank Cassel, "The Banjo Man."

Tickets are \$3 each, and will be sold at the carnival. Winterfest's snow date is Saturday, February 21.

The Banjo Man will perform three shows during the carnival, featuring lively bluegrass, folk and children's songs. LCYC's Winterfest will also offer a wide variety of fun-filled activities for children of all ages, including a Moon Bounce, face painting, crafts, and carnival games.

In addition, a Silent Auction will feature numerous bargain items, including dinners at local restaurants, sporting events, and theater events. There will also be a 50/50 raffle; tickets will be \$1 each. Delicious gourmet desserts will be sold at the Winterfest Bake Sale and Armand's pizza will also be served.



Mardi Gras Box Tops Collection Contest

Turn your Box Tops into the Collection Box in the Main Office no later than **TUESDAY, FEBRUARY 24, 2009**. Make sure your full name is included with your submission to receive a prize.

For more information about the Box Tops for Education program at Shepherd, contact Laura Noble, Box Tops Program Coordinator at: TaylorFarm@kddmgroup.com.

**Remember to keep clipping
Box Tops for Shepherd!**

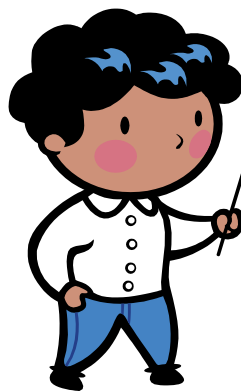
Laissez les Bon Temps Roulez!



PTA Member Incentive: Obama Inaugural Flags

The next 10 families that join the PTA will receive flags that were distributed by volunteers working at the inauguration of President Barack Obama. The flags are 6 inches by 9 inches on a 2-foot stick. They are being donated by new PTA Membership Committee Chairman Marcus Hall.

"These flags were handed out by volunteers for the inaugural committee. I received these flags from Reverend Janice, a D.C. native, who is now a missionary at an orphanage in Kenya," says Marcus. "Our family values these mementos from the inauguration, but we value the success of Shepherd students even more."



This is even better than the stuff you get by donating to PBS. If you want one of these flags, write your \$50 check to "Shepherd Elementary PTA," but put "PTA membership/flag" on the memo line of the check. The first 10 we get that have those magic words on the check will get their flag. Put your check in an envelope and drop it into the PTA box in the main office. Don't risk being the 11th: Join today!

The Mustang Is YOUR Newsletter

Do you have a comment, a suggestion, or something to share with the Shepherd family in *The Mustang*? Would you like to write an article to be included in an issue of *The Mustang*?

Send it in an e-mail to SESmustang@gmail.com.

The next issue of *The Mustang* comes out on Friday, February 13, 2009.

Submit information to be included by Tuesday, February 10.



Join the PTA Listserv Today

To subscribe, send an email (include your name, your child's name and his/her teacher/class) to:

Shepherd_Elementary_PTA-subscribe@yahoogroups.com.

Once signed up, you will be able to receive listserv updates directly to your email inbox. If you prefer to not receive emails for each listserv posting, simply select "no email" under the message delivery option in your listserv user set up.



Shepherd Elementary School

7800 14th Street, NW, Washington, DC 20012

Office Telephone: 202-576-6140

Office Fax: 202-576-7578

Mrs. Jamie Miles, Principal — jamie.miles@dc.gov

Ms. Robyn Brooks, Admin. Assistant — robyna.brooks@dc.gov

The Mustang Newsletter Editors: Kimberly Brandon, Fred Lewis, Mark Pattison, and Matt Sullivan. Layout/Design: Laura Noble

Send your submissions for the next issue of *The Mustang* to: SESmustang@gmail.com. Deadline is Tuesday at 10 am for inclusion in the newsletter issued that Friday.