



Shepherd Elementary School

THE MUSTANG

Home of the Shepherd Mustangs

Friday, January 9, 2009



Mark Your Calendars!

- 1/15 – LSRT Meeting, 3:30 pm SES Library
- 1/19 – Martin Luther King Day—NO SCHOOL
- 1/20 – Inauguration Day—NO SCHOOL
- 1/21 – PTA Meeting, 6:45 pm, SES Auditorium
- 1/21 – Songs of Freedom tickets go on sale
- 1/22 – 3rd through 6th Grade January Parent Meeting, 5:45-7:30 pm
- 1/23 – Early Dismissal, 12:15 pm (no aftercare)
- 1/24 – Saturday Language Classes begin
- 1/28 – First Prospective Parent Open House, 9:00-11:00 am (see page 3)
- 1/29 – Pre-K through 2nd Grade January Parent Meeting, 5:45-7:30 pm
- 1/26-2/13 – Prospective Parent Building Tours

A Word from Mrs. Miles!

Dear Shepherd Family,

Happy New Year! I hope this message finds you well. I had a wonderful holiday break and I hope you had the same. We are back! We are ready! We are moving forward!

Tardiness

First let me begin by thanking each of you for making a conscious effort to get your student(s) to school on time. Our tardiness rate has decreased this week and we are extremely happy. Please continue working to get your student(s) to school between 8:25 am and 8:35 am. Our teachers begin transitioning students to class between 8:35 am and 8:40 am. We are tracking daily attendance and tardiness. The class/classes with the least amount of tardies and the least absences during the month of January will be awarded with a pizza party.

(See Principal, continued on page 2)



Looking at the Person in the Mirror

One of the many hit songs of the 1970s and 80s by the young Michael Jackson included the following insightful lyrics:

I'm looking at the man in the mirror, I'm asking him to change his ways.

If you want to make the world a better place, just look at yourself, and make that change.

I recalled these lyrics while thinking during the holidays about a very sincere observation made by a parent at the December 17 PTA meeting. This gentleman expressed a personal concern that the school has “gone down” in recent years. Because this observation came near the end of the meeting, those present discussed it only briefly, neither taking issue with it, nor accepting it as accurate.

As regards taking issue with it, one might acknowledge several enduring truths about Shepherd. First, the school has continued to achieve Adequate Yearly Progress (AYP), as measured

by DCPS Comprehensive Assessment System (CAS) testing. This achievement is owed directly to the efforts of the school's students, teachers, school administrators, and parents. Second, Shepherd has offered instruction in Spanish and French at a level that exceeds the offerings of all other DCPS elementary schools in the city, except Oyster. Third, Shepherd offers outstanding music and art education programs. Finally, the school building – with new windows installed and some great interior painting during the holidays – looks better than it has for many years.

Still, the gentleman's statements underscores a reality with which one probably cannot argue, i.e., the school is not achieving its full potential. It could be – and should – be achieving even higher CAS scores; it could offer more enrichment programs in science and technology; it could have better-equipped sports facilities, and added coaching resources for our student athletes. The possibilities go on and on.

(See Mirror, continued on page 2)

(Mirror, continued from page 1)

So, I thought during the holidays, how does this school community enable the school to achieve more of its unrealized potential? That's where Michael Jackson's "prophecy" came in. Each person invested in Shepherd's well-being must look in that mirror, and determine how s/he can make Shepherd a better school. I argue that the results would be amazing if, while looking into that mirror, we asked ourselves the following questions, then acted on the answers:

- Do I get my children to school on time every day?
- Do I read to my children as many times as I can every week?
- Do I confer with, cooperate with, and support the efforts of my child's teacher to maximize my child's learning and overall development?
- Do I volunteer my time and talents for the purpose of making Shepherd an increasingly effective, safe, and nurturing environment every Monday through Friday from 8:45 a.m. to 3:15 p.m.?
- Have I, by paying the annual membership fee, helped the PTA provide teaching and other resources to the school that its budget does not allow?
- Have I, for the same purpose, contributed as much of the \$500 Family Enrichment Fee as my family can afford?

As we move into this second half of the school year, let's all look in that mirror. Let's all act on the answers to the questions above (and to others you might put to yourself privately), to make Shepherd a better place – the school that it can and should be.

Earl Yates
President, Shepherd PTA



(Principal, continued from page 1)

School-wide Homework

This week began our first week of school-wide homework. Every Wednesday students will have Constructed Response (CR) homework in reading and in math. The first group to begin this assignment is our 3-6 grade students. They had their first reading CR assignment Wednesday.

Next week, they will have a reading and math CR assignment. Students in 2nd grade will begin their weekly Wednesday CR homework later this month followed by students in grades PK-1.

Why constructed response practice? After careful data analysis, it was found that we can increase our DC CAS scores by at least 20% if our students score a 2 or greater on CR items. For the CR items in last year's testing, we had 72 students who scored 0 in reading and 68 who scored a 0 in math. This means our students did not attempt to answer the questions or they completely answered the questioned incorrectly. For example: The test asked the students to state the author's purpose and instead they told why they enjoyed the story. Reading CR measures how well students comprehend text. It does not measure how well they express themselves, spelling, and/or grammar.

Additional information about reading and math CR will be shared in upcoming editions of *The Mustang*. We will also discuss CR at this month's grade level parent meetings.

Afternoon Dismissal

On Monday you received a memo asking you to let us know how your child is to be dismissed in the afternoon (walk, van/bus, Star Achievers, meet out front (carpool) or wait in the dismissal area (gym or playground). If you have not returned your form, please do so next Monday. We are working to make our dismissal safer and more efficient. Upon receipt and review of the forms, we will be making some slight changes to our dismissal procedure. You will be provided with detailed information prior to implementation.

Please adhere to the dismissal times and strive to pick your student up on time (not early and not after 3:25). Our instructional day ends at 3:15 pm. Around 3:00 pm our students are preparing for dismissal. It is very distracting to teachers and students when they are called to the office to be dismissed between 3:00 and 3:15 pm. When students are called during this time, they lose focus, they rush to write down assignments and they forget things. The afternoons are probably our busiest time of the day and we have many parents/guardians in the office around 3:00 asking for their child to be dismissed early.

Beginning next week, students will not be dismissed after 3:00 pm. We kindly ask that you wait in the designated areas) for your student to be dismissed. If you need to pick your student up early, please do it before 3:00 pm.

(See Principal, continued on page 3)

(Principal, continued from page 2)

Language

Our Saturday Language Academy will begin on January 24, 2009 and will continue through April 18, 2009 (excluding Easter weekend). If you have expressed interest via email, sign-up sheets or surveys, you will receive a letter/invitation on Monday, January 12, outlining the program specifics. You will also be asked to accept or decline the invitation. Currently we are not accepting any more students in the Saturday Language Academy. The school community will be notified if additional space becomes available.

Parent Grade Level Meetings

January parent grade level meetings will be held January 22 (grades 3-6) and January 29 (PK-2) from 5:45 pm to 7:30 pm. This month's parent meetings will be focused on Constructed Response. Attendees will be introduced to the R.A.C.E. strategy teachers will be using with students in class to help them tackle constructed response questions and they will learn more about how to help their student at home successfully answer Constructed response questions. Everyday Mathematics games will be played and attendees will learn how to make and play math games at home with their child to review essential math skills/topics.

We will also have a PYP session which will introduce attendees to fun interactive question activities that may be used at home students. These sessions will be facilitated by Mrs. Miles, Dr. Tucker and teachers. Attendees will have the opportunity to rotate to each session.

Holiday Packets

Many students completed their holiday packets. Thank you. Please note that the packets were comprehensive and included things students should know before exiting their current grade. Some of the items had not been introduced prior to the break. Teachers follow the DCPS pacing guides to guide their instruction. These guides may be found at www.k12.dc.us/Teachingandlearning/Course_Pacing_Guides.htm.

DC BAS

The second DC BAS will be administered to students in grades 3-6 on January 14 & 15. Please work to make sure your child is well rested, has a healthy breakfast and arrives to school on time.

Thank you again for all you do!

Warmest regards,

Jamie Miles

Spread the Word!

Open Houses for Prospective Shepherd Parents

Shepherd Elementary School Open Houses are scheduled for January 28, 2009 and February 11, 2009 from 9:30 am to 11:00 am. There will be a brief information session, followed by a Q&A and building tour.

Building Tours for Prospective Shepherd Parents

The building will be open for prospective parents to tour our building during the last week of January through the second week in February (January 26, 2009 – February 13, 2009). Tours will be held every half hour on Tuesdays and Thursdays from 9:00 am -11:00 am. These tours are for parents who are unable to attend the Open House but would like to tour our facilities. Prospective parents must call the school at 202-576-6140 to schedule a building tour.

If you are a parent interested in providing potential parents with a guided tour, please send an email to Ms. Brooks at robyna.brooks@dc.gov or call her at 202-576-6140.



The Mustang Is YOUR Newsletter

Do you have a comment, a suggestion, or something to share with the Shepherd family in *The Mustang*? Would you like to write an article to be included in an issue of *The Mustang*?

Send it in an e-mail to SESmustang@gmail.com.

The next issue of *The Mustang* comes out on Friday, January 16, 2009.

Submit information to be included by Tuesday, January 13.



Shepherd IB-PYP Corner

Introduction to the Curriculum Framework and Unit of Inquiry

Update:

This week, teachers are beginning to use some of the critical thinking strategies that Ms. Tucker introduced to them last month. Parents will have the opportunity to try some of these strategies during the Principal's grade level parent meetings this month.

This week, Ms. Tucker has been meeting with grade level teacher teams to begin aligning social studies and science topics with the six PYP themes, the first step in constructing their first PYP "unit of inquiry."

Ms. Tucker has also set up an informational bulletin board on the IB PYP in the hallway outside of the main office.

PYP Lesson of the Week:

The PYP Curriculum Framework, often referred to as the PYP "hexagon", is a schematic representation of the elements of the learning process in the PYP. This graphic is pictured in this newsletter on the next page.

The PYP interdisciplinary "unit of inquiry" is a teaching and learning plan that covers a period of about six weeks and is typically built around a social studies or science topic linked with one of the six PYP themes. The unit is comprised of several distinct parts: a central idea, key concepts, related concepts and lines of inquiry, in addition to the theme and topic.

The written unit planner (and the teaching) will include learning activities that incorporate skills in several subjects and various types of assessments.

Teachers collaboratively create these units to guide their teaching during part of each school day. In some advanced PYP schools, all teaching and learning is driven by the PYP unit. However, in developing PYP schools, this is often not the case. Over the course of the school year, there must be six units of inquiry implemented on each grade level except pre-kindergarten (four units required) and grade five (five units and "the exhibition" required). The exhibition is a year-long project that all students in the class contribute to. Units of inquiry are subject to reflection by students and review and refinement by teachers. A matrix showing all of the units of inquiry for all of the grade levels is created for internal use and public viewing. This matrix is called the school's "programme of inquiry."

Question for reflection and discussion:

Is it constructive to integrate several subjects in a single unit of inquiry around a specific theme and related topic? If so, why? If not, why not? Are there any pitfalls?

~ Patricia L. Tucker & Jamie Miles

January Parent Grade Level Meetings

Expect a phone call later this month – if you haven't gotten it already – reminding you of the dates of the January grade-level parent meetings. This will be the second in a series of meetings that started in December to assess the school's strengths and weaknesses and how to get Shepherd moving in the direction we think it should be moving in. Notices of the January parent meetings schedule will also be posted on the PTA listserv – another fine reason to join (see back page for details on how to subscribe).

Parents of students in grades 3, 4, 5, and 6: Meeting will be held on Thursday, January 22 from 5:45 pm until 7:30 pm.

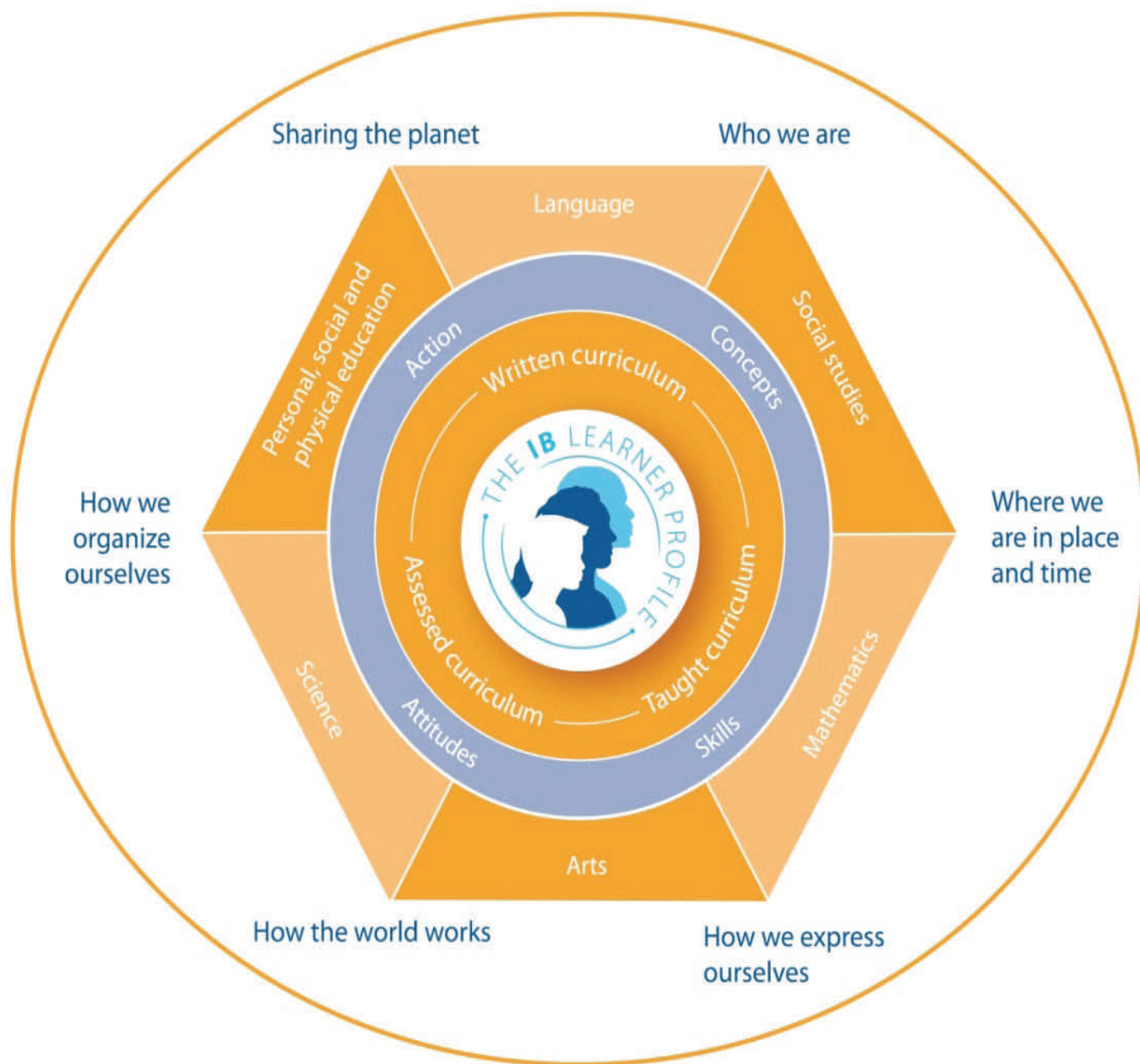
Parents of students in grades Pre-K, K, 1, and 2: Meeting will be held on Thursday, January 29 from 5:45 pm until 7:30 pm.

These meetings will be held in the Auditorium. Child care is not provided. So that all parents attending the meeting are able to fully participate, there will be tables in the back of the auditorium at which children may work quietly on homework or read.

***Have YOU joined the
Shepherd PTA yet??***

PTA[®]
everychild.onevoice.

IB-PYP Curriculum Framework



- At the core is the Learner Profile. Everything revolves around that.
- Around the core are the three parts that comprise a school's curriculum: The Written Curriculum ("What do we want to learn?" - the DCPS standards, scope and sequence, etc.), the taught curriculum ("How best will we learn?" – the teaching and learning strategies implemented in the classroom) and the assessed curriculum ("How will we know what we have learned?" - ways of determining what or how well students have learned what was taught).
- Circling the curriculum parts are four essential elements: concepts, skills, attitudes and action.
- Surrounding those four elements are the two sets of components of the framework that support and balance the fifth essential element, which is knowledge: the six subject areas (*language, social studies, mathematics, the arts, science and personal, social and physical education*) and the six transdisciplinary themes of global significance: *sharing the planet, who we are, where we are in place and time, how we express ourselves, how the world works, and how we organize ourselves.*

Literacy Corner

Happy New Year! I hope that your holiday season was safe and enjoyable!

Parents, we are all about improving achievement here at Shepherd. We Need Your Help!!! We are in a R.A.C.E. to improve our students' constructed responses. Below you will find strategies (charts) that your child will be sharing with you soon. The R.A.C.E. Strategy will be used in all classrooms at Shepherd. This strategy will help guide students' responses.



The Performance Verbs are some of the words that your child may see in a question. The chart provides students with "What to Do," when he/she sees these words. Students will be asked to answer a constructed response item in class, as well as, weekly homework. Please remind your child to use the Performance

Verbs chart (to help understand the question) and the R.A.C.E. Strategy (to help answer the question fully). Take a chance, read the text and answer the question yourself, prior to checking your child's response. This will give you an opportunity to understand the demand of a constructed response item. You will also be aware of child's comprehension and thought process as it relates to the question.

This week's Constructed Response homework: Review the Performance Verbs and R.A.C.E. Strategy .

Next week's Constructed Response homework: Students will read a selection and use the R.A.C.E. Strategy to respond to the Constructed Response question.

*** Primary Grades students will receive constructed response practice orally.**

~ Crystal Moorefield, Literacy Professional Developer

Constructed Response Strategies

Performance Verbs : (Breaking down the question)

Anchor Word	What to do
1. Describe	Give details.
2. Explain	Give the reason or steps.
3. Summarize	Briefly state the main points.
4. Compare	Point out similarities.
5. Contrast	Point out differences.
6. Illustrate	Give examples.
7. Discuss	Tell about the topic from all angles.
8. List	Give no details, just items.
9. Justify	Give proof/evidence.

How to Answer a Constructed Response Item:

R—Reword the question into a statement

A—Answer the question

C—Cite evidence from the passage to support your answer

E—Explain how your evidence/example supports your answer

Additional Skill Practice: Context Clues

Use context clues to determine the meaning of the underlined word.

I took the tome off the shelf and opened it to page 94. Then I began to read.

1. What does tome probably mean?
a) some food b) a bad dream c) a cigarette d) a book

Hurricanes and tornadoes are treacherous. Only a very foolish person would go out during that kind of weather.

2. What does treacherous probably mean?
a) exciting b) dangerous c) delirious d) safe

I'm really hungry! That apple didn't appease my hunger. I want a sandwich now.

3. What does appease probably mean?
a) frustrate b) increase c) satisfy d) confuse

Problem of the Week

Students must know their addition, subtraction and multiplication facts. Please practice these facts daily. Make flash cards, allow your student to take timed tests on the computer, play fact games, get the whole family involved.

Primary Grade Students:

Practice your Addition and Subtraction Facts.

Intermediate Grade Students:

Practice your Multiplication Facts.



Past Issues of The Mustang are Online

Would you like to read *The Mustang* electronically? Need to refer back to a past issue? Each week, *The Mustang* is uploaded to the files area of the PTA listserv. Join the listserv and click to read.

http://groups.yahoo.com/group/Shepherd_Elementary_PTA/files/%22The%20Mustang%22/

Everyone's New Year Resolution: Eliminate Tardiness At Shepherd

What are YOU doing to make sure YOUR children get to school on time?

- Wake up earlier?
- Wake up your kids earlier?
- Get backpack contents squared away before bedtime?
- Set a deadline to be out of the house?
- Make them walk to school if they're not in the car by a certain time?

They may seem like drastic measures, but when up to one-fifth of our students are coming to school late, each family has to tackle this problem.



Parents need to set the tone: Zero tolerance for tardiness.

What are you doing? Make it a New Year's resolution:

No more tardiness at Shepherd.

Trivia Corner — Just for Fun!

Each week students will be asked a trivia question. Students should place their name and the answer to the trivia question in the trivia box located outside the cafeteria door. On Tuesdays, one lucky winner will be selected to receive a special treat. Answer this week's trivia questions by Tuesday.

Trivia Questions:

Dr. Martin Luther King, Jr. was a famous civil rights leader. In 1963, he gave a famous speech.

- What was the name of that speech?
- Where did he give this speech?



Answer to last week's trivia question:

Canada, the U.K., and most other Commonwealth countries officially celebrate the day after Christmas as a holiday. This holiday is called BOXING DAY.



Box Tops Update

Thanks to everyone who turned in Box Tops for the Happy Holidays Collection Contest.



We raised almost \$100 in Box Tops for Shepherd Elementary School during this collection contest. Thirty-six students (representing 14 classes) contributed Box Tops. The class that turned in the most Box Tops – with over \$14 worth of box Tops – is Mr. King's sixth graders! The sixth grade class will receive a special treat. Additionally, each student who submitted Box Tops received a prize!

We are on track to exceed our annual goal of \$650 for this school year. If we continue at our current rate, we may even move up to be the #2 school for Box Tops in the entire District of Columbia. (Last year, we were #4; in previous years, we weren't even ranked!)

Our next Box Tops collection contest – with a *Mardi Gras* theme – will be introduced next week. So, remember:



**Keep clipping Box Tops
for Shepherd!**

The Next LSRT Meeting Is Open To The Public



Next Thursday's Local School Restructuring Team meeting is open to the public. It will be held at 3:30 p.m. in the library of Shepherd School. Copies of previous LSRT minutes are posted near the library.

For more LSRT details, contact LSRT chair Rhonda Davis Smith at championco@aol.com.

Who's Buried In Grant's Tomb?

The answer – not even the joke answer – is what you think it is. Even in today's uncertain economy, there are grants that can establish, support or expand our educational mission at Shepherd Elementary.

Proposals for grant money are typically submitted in late February or early March. This means, then, that we have to start now to identify funding sources that would look kindly on our needs, and write the grant proposals.

If you or anyone you know has experience writing grant proposals of any type, please get in touch with Shepherd PTA treasurer Doug Noble at taylorfarm@kddmgroup.com or Marnie Keller at marniekeller@gmail.com and include your name, contact information and prior grant-writing experience.

There are grants ranging from \$5,000 all the way up to \$100,000 that could be ours if we do our jobs right.



The Mustang is for Parents & Kids!

Hey Parents: Be sure to share the activity sections of *The Mustang* with your children each week. You can help your children work through the fun and educational activities featured in each week's *Mustang*. These activities are based on DCPS standards.



And don't forget to have your kids answer the weekly Trivia question! Winners names will be published here in *The Mustang*.

PTA Membership Sprint Heats Up In January



It's no coincidence that the Shepherd PTA adopted a Barack Obama theme for our membership sprint between now and the next PTA meeting. Obama's historic candidacy and victory will culminate in a historic inauguration ceremony on January 20, the day before the next regularly scheduled PTA meeting on the 21st. His inspiring achievements should inspire us to succeed at all we do, and that should filter to our children.

Barack Obama will become the 44th president of the United States. To that end, we are discounting PTA membership from \$50 to \$44 for this membership sprint only!

In the November election, Barack Obama captured 365 electoral votes (Muriel Bowser, our Ward 4 councilmember, cast one of D.C.'s three electoral votes for Obama). With this number in mind, we are asking parents to contribute \$365 to the Family Enrichment Fee to be considered fully "enriched." And, you can claim a deduction on your taxes with a contribution of any size to the PTA Family Enrichment Fee. Send your Family Enrichment Fee to: Shepherd Elementary School PTA, 7800 14th St. NW, Washington, DC 20012. make the check to "Shepherd Elementary PTA," and write "Family Enrichment Fee" in the memo line.

This is the place where you can send your PTA membership checks, too. To avoid confusion with PTA memberships and Family Enrichment Fee contributions, write separate checks (although you can mail them in the same envelope!).

With 355 students for 2008-09 – way up from last year's 309 – Shepherd Elementary is one of those all-too-rare success stories in the D.C. Public Schools system. The mother of a new student in my daughter's kindergarten class remarked to me on the last day before winter break at the class holiday party on how her child had been at Takoma School before Shepherd, but the positive difference was just amazing.

But none of that comes automatically. The PTA pays for lunch aides to keep lunch time more orderly. The PTA pays for a French language aide to bolster our younger students' knowledge of French. The PTA also pays for a math tutor to increase our children's mathematics comprehension. These are things that one would think DCPS would pay for, but either can't or won't.

Can the Shepherd PTA do it? Yes we can! But only with your help. Join and contribute today.

~ Mark Pattison

Announcing 'Songs of Freedom and Justice'

The 'Songs of Freedom and Justice' will be performed in February 2009. This musical history of the U.S. covers 150 years, from the anti-slavery era, through the union movement, to the civil rights movement of modern times. Along the way, students sing blues, jazz, rock, gospel, and songs with a message. We picked 80 students to be narrators or to portray historical figures such as Harriet Tubman, Duke Ellington, and Bernice Johnson Reagon. All students in the school are learning the 25 songs. Art students are drawing portraits of some of the historical

characters. Some students are exploring biographies of the musicians. The February concerts will include singers from the D.C. Labor Chorus who have been rehearsing at Shepherd Elementary School on Monday evenings. This is a wonderful inter-generational musical activity.

We will make a professional quality audio recording of the concerts and will have CDs to give to the students and sell to grandparents, aunts and uncles, and friends. The two performances will be at 6:45 pm on Wednesday, February 11 ("dress rehearsal") and Thursday, February 12 (public performance). No costumes, just school uniforms. We're focusing on the songs. We hope to take some of these songs "on the road" to perform at the Labor Arts Exchange (at the National Labor College in Silver Spring) in June 2009.

~ Ken Giles



Ticket Information for 'Songs of Freedom and Justice'

Tickets will go on sale starting at the January 21 PTA meeting for the annual "Songs of Freedom and Justice" concert being staged by our music teacher, Mr. Ken Giles, and featuring 80 Shepherd Elementary students plus the D.C. Labor Chorus. The concert will be held Thursday, February 12, 6:45-8:15 p.m. in the Shepherd Elementary auditorium. If you choose, you can also go to a free dress rehearsal the evening before, on Wednesday, Feb. 11, also set to start at 6:45 p.m.

Both the dress rehearsal and the performance will be recorded for a compact disc featuring all 25 songs in the show. Every Shepherd student will get a free CD, but orders will be taken, starting January 21 as well, if you want to buy extra CDs for friends, neighbors and relatives.

This is a show you will not want to miss. But be prepared to get your seat. Capacity is limited to 200 for both Feb. 11 and Feb. 12.

Music Corner

Here are some activities in music class in January:

- Singing songs of the Civil Rights Movement, featuring the Freedom Singers and the 1963 March on Washington.
- Drawing notes, rests, and bar lines. This supports the "music notation" standard.
- Rehearsing for the "Songs of Freedom and Justice" musical program in February.
- 5th and 6th graders composing a student opera, to be performed in March.



~ Ken Giles

Community Events

Classes and Camps at CREATE Arts Center

- One Day Camps on these no school days, 1/19 and 1/20.
- New afterschool & weekend classes start 1/11.

Register online at www.createartscenter.org. CREATE Arts Center is located in downtown Silver Spring.

Friends of the Shepherd Park Library

The Friends of the Shepherd Park Library will meet at 7 p.m. Monday, January 12 in the second floor meeting/activities room of the library, 7420 Georgia Avenue NW. Come meet the new branch manager, Ms. Jameely Dahma. The library is an excellent resource for tutoring help and homework research, and additional computers – including laptops – are coming to the library!

Shepherd Park Citizens Association

The Shepherd Park Citizens Association will host its annual New Year/New Member Potluck from 5 to 7 p.m. on Sunday, January 25 (this is rescheduled from a different, previously published date) at the Lowell School on Kalmia Road west of 16th Street. If you live in the Shepherd Park neighborhood – bordered by Walter Reed Army Medical Center on the south, Georgia Avenue on the east, the D.C./Maryland line on the north, and Rock Creek Park on the west, then this event is for you. And there is a play space for children. Because this is a potluck, bring an entree, a salad, a side dish or a dessert with you. RSVP with how many from your household are coming and what dish you're bringing to: Christine Martin at 202-723-0976 or christine@dcmartins.com.

Get Healthy 4 Life – 16th Annual NBC4 Health & Fitness Expo

Saturday and Sunday, January 10-11, 2009

Washington DC Convention Center

Mark your calendar now for the 16th Annual NBC4 Health & Fitness Expo! It's a Washington tradition and a great way to kick off the New Year. Over 200 businesses and organizations will be serving up activities and exhibits for everyone young, old, and in-between. Plus there will be lots of free giveaways, health tests and screenings, special guests, cooking demos, chances to win great prizes, exercise classes and more. Admission is FREE!

DC Youth Orchestra

The DC Youth Orchestra Program (DCYOP) provides a center for affordable, music instruction and performance opportunities for young people ages 4½ -19. The DCYOP instills in their students the discipline and focus necessary to succeed on an academic as well as a musical plane.

The DCYOP offers a comprehensive music education program that serves young people in the greater DC metropolitan area. Instruction is available for all orchestra and wind ensemble (band) instruments; beginning, intermediate, and advanced students.

Register now for music classes. The spring session begins January 24th. Classes are held at Calvin Coolidge Senior High School. For more information, go to www.dcyop.org. You can email info@dcyop.org or call 202-723-1612.



Middle School Open House Reminders for 5th & 6th Grade Parents

Deal Middle School

5th Graders will be invited to Deal MS in the Spring 2009 for an Open House which will include tour of the school and lunch for ½ day.

Hardy Middle School

Open House Wednesday 1/14/09, 9-11 am
(Call Hardy at 202-698-3885 for more information.)

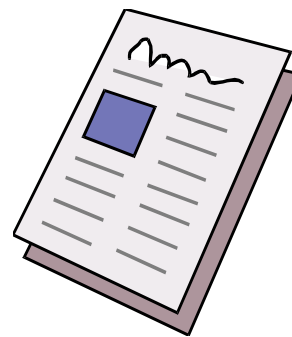


Newsletter Volunteers Needed

Feedback on the expanded school newsletter has been quite positive. However, putting together the newsletter each week is a collaborative effort. And a *Friday* newsletter loses its luster if it's not seen until *Monday*. *The Mustang* is copied on Thursday afternoons for Friday distribution. It only takes about an hour or so to get the work done.

If you can volunteer to take a regular shift – even once a month – your efforts will help with school communications – and you'll get a jump on the new school news to boot!

Contact Mark Pattison at 202-829-9289 or by email at pattison_mark@hotmail.com.



Join the PTA Listserv Today

To subscribe, send an email (include your name, your child's name and his/her teacher/class) to:



Shepherd Elementary School

7800 14th Street, NW, Washington, DC 20012
Office Telephone: 202-576-6140
Office Fax: 202-576-7578

Mrs. Jamie Miles, Principal — jamie.miles@dc.gov
Ms. Robyn Brooks, Admin. Assistant — robyna.brooks@dc.gov

The Mustang Newsletter Editors: Kimberly Brandon, Fred Lewis, Mark Pattison, and Matt Sullivan. Layout/Design: Laura Noble

Send your submissions for the next issue of *The Mustang* to: SESmustang@gmail.com. Deadline is Tuesday at 10 am for inclusion in the newsletter issued that Friday.