

THE MUSTANG

Home of the Shepherd Mustangs

Friday, December 12, 2008

Upcoming Shepherd Events



Mark Your Calendars!

12/17: December PTA Meeting,
6:45 pm Auditorium

12/22 – 1/2: Winter Break—NO SCHOOL

1/5: Welcome Back from Winter Break

A Word from Mrs. Miles!

Dear Shepherd Family,

I hope this message finds you well. This week students in grades 3-6 were shown their test data from DC CAS test P and DC CAS test A. The students had the opportunity to see how much growth their grade level made from one test to the next and how their scores compare to other grade levels. The good news, each grade level showed growth; however, we still have a lot of work that needs to be done. Each class is working with their teacher to set achievement goals in both reading and math for test B. These goals will be posted outside of each classroom and we will be monitoring students' progress as they work to reach their class goals. The data will be shared at next week's PTA meeting and in the December 19 edition of *The Mustang*. The data is also on display in the hallway as you travel to classrooms.

Students in grades K-3 who did not meet benchmark for the first DIBELS administration are being monitored weekly and/or bi-weekly through interim assessments. Currently DIBELS data is not on display but will be shared and posted in the upcoming weeks.

(See Principal, continued on page 2)

Join us Wednesday 12/17 for the

December

PTA Meeting

Shepherd Auditorium

6:45 pm

Although attendance at the PTA meetings is not required, we encourage all parents to attend. Childcare and refreshments are available during PTA meetings. (Refreshments for the children attending the PTA-provided childcare have a nominal cost; refreshments for adults attending the PTA meetings are complimentary.)

School starts on time!
So do PTA meetings!

Look for the full agenda on the PTA listserve.

PTA[®]
everychild.onevoice.

A Message from the PTA

What does your paid PTA membership and family enrichment fee pay for? Our PTA financially supports the following:

Academic enrichment (test preparation, tutoring, etc.); Classroom Instructional aides; Foreign language instruction; Lunch room monitors; Information technology support; Teacher stipends; Student activities; Classroom supplies, curriculum materials and supplies for extracurricular activities (i.e., Lego robotics program, science fair, school dances, movie nights, etc.); Friday morning coffee and food, babysitting and janitorial expenses for PTA meetings; Teacher Appreciation activities; and Music program instruments and maintenance.

We encourage everyone to become PTA members by paying the \$50 membership fee. For your convenience, a PTA membership form is attached to this issue. If you haven't already done so, complete it and put it in the PTA box in the Main Office, or bring it with you to the PTA meeting next Wednesday.

WE NEED YOUR SUPPORT in order to continue the wonderful work the PTA does now and hopes to continue to be able to do to support the enrichment of OUR children.

(Principal, *continued from page 1*)

Afternoon Dismissal

If your student is not in afterschool, participating in an after school event (i.e., tutoring, music, band, basketball practice), they must be picked up by 3:25 pm. Each afternoon we have a large number of students waiting in the front office or roaming through the building. This creates challenges and safety concerns for the school. We are currently reviewing our afternoon dismissal procedures. An update will appear in a January edition of *The Mustang*.

Inclement Weather

As you know, inclement weather has the potential to impact our school schedule (delayed openings or school closings). Although the process for addressing these situations is similar to one used in previous years, there has been one substantial change: elimination of the color-coded system.

As in the past, the decision made and announced will be one of the following:

Inclement Weather Options

- Option 1: All schools and district administrative offices are closed. Only essential personnel report to work.
- Option 2: Schools are closed. District administrative offices are open.
- Option 3: Schools open for students and teachers two hours late. District administrative offices open on time.
- Option 4: Schools and district administrative offices open two hours late.

During these situations, it is important to monitor one of the stations listed below. Decisions regarding changes with the start of school are given to radio and television stations to be broadcast beginning at 5:30 am and at repeated intervals thereafter.

- AM Radio: WMAL (630); WOL (1450); WACA/Radio América Spanish (1540); WTOP (1500)
- FM Radio: WAMU (88.5); WTOP (107.7); WHUR (96.3)
- Television: Channels 4, 5, 7 and 9; Cable Channels 8, 16 and 28

(Continued in next column)

(Continued from previous column)

Also, inclement weather announcements will be posted on the DCPS Website at www.k12.dc.us.

Lost and Found

The last day to claim items in the Lost and Found boxes located in the Parent center will be on December 19, 2008. The items will be available for you to look through at Wednesday's PTA meeting and we will make the items available to students on December 18 and 19. All unclaimed items will be donated to the local Goodwill agency.

Winter Break Academic Packet

Since the beginning of the year, our students have made great academic strides. To make sure that your child does not lose this momentum, they will be receiving a winter break academic packet.

Your child will be provided a holiday homework packet the week of December 15, 2008. It is expected that your child will complete both the reading and mathematics packets.

This work is due upon your child's return to school on Monday, January 5, 2009. This work will be reviewed as Bell Work over the first few weeks of school in January and will be included in the overall grading for the second advisory.*

Please set aside some time each day during the winter break that you expect your child to work on this assignment.

I encourage you to discuss the work with your child when possible and check over their answers.

* Bell Work, as the name implies, is the schoolwork that students are doing when the "bell rings". It is always the first task of the class period.

Language Instruction

Wednesday, December 17 is the last day to express interest in our afterschool and/or Saturday language program. If interested, please email: shepherdsurvey@yahoo.com. We are hoping to begin in January.

Warmest regards,
Jamie Miles



Shepherd IB-PYP Corner

The IB Learner Profile, Part IV

Update:

- Last week Principal Miles began holding grade level meetings for parents. These meetings included an introductory presentation on the International Baccalaureate Primary Years Program by Patricia Tucker or by Mrs. Miles, when Ms. Tucker was out of town. The format of the presentation consisted of a PowerPoint with commentary by the presenter, followed by a small group activity that mirrored some of the PYP inquiry learning methods. Parents completed a pre-assessment at the start of the presentation to assess their prior knowledge about the PYP and revisited their answers at the end of the presentation and group activity, as a way to assess the new learning they had acquired. The presentation and related handouts introduced historical information about the IB, general and unique characteristics of all IB programs and the special characteristics of the PYP. In small groups parents discussed what parental support of the PYP could look like. A spokesperson for each small group reported their ideas to the whole group. The grade level parent meetings continued this week.
- Ms. Tucker went to New York City last week to serve as a member of a three-person IB North America team charged with visiting another "IB candidate school" to assess its readiness to become an authorized IB World School. Such experience helps Ms. Tucker to better prepare Shepherd for its "site visit" by an IBNA team, which is anticipated to take place in the winter or spring of SY 2009-10.

PYP Lesson of the Week:

This week we continue focusing on two of the ten attributes in the IB Learner Profile. In this article, we are examining the seventh and eighth attributes:

IB learners strive to be:

Caring: *They show empathy, compassion and respect towards the needs and feelings of others. They have a personal commitment to service, and act to make a positive difference to the lives of others and to the environment.*

Risk-takers: *They approach unfamiliar situations and uncertainty with courage and forethought, and have the independence of spirit to explore new roles, ideas and strategies. They are brave and articulate in defending their beliefs.*

Questions for reflection and discussion:

1. How can we (as parents or as students) be more caring toward others?
 2. Is it good or bad to be a risk-taker? What are the advantages, and what are the disadvantages?
 3. Do we encourage our children enough to be independent and courageous? If not, why?
- (Remember, these are all open-ended questions. They have no right or wrong answers.)

~ Patricia L. Tucker & Jamie Miles

Today, Silver Spring, Tomorrow, the Kennedy Center!

Five Shepherd Elementary School students sang with the D.C. Labor Chorus at its December 6 holiday concert: Kyla Marrkand, 6th grade; Gus Marrkand, 4th grade; Leia Terrell, 6th, grade; Joy Nicholas, 6th grade; and Tyler Jones, 6th grade. A special nod also to Brianna Morgan, a 6th grader, who came to all the rehearsals but unfortunately felt ill and couldn't perform at the concert.

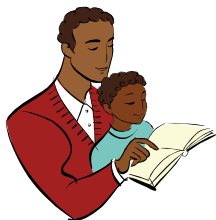
The D.C. Labor Chorus will sing with Shepherd Elementary students at the February 11-12 performances of "Songs of Freedom and Justice," to be held at Shepherd. We will make a CD recording of those performances so students can have a good audio memento. The Shepherd School PTA will also have CDs to sell to friends and relatives



Have YOU joined the Shepherd PTA yet??

PTA[®]
everychild.onevoice.

Literacy Corner



Literacy for All — Journal Writing!

Write: Give your child a small notebook and set aside a few minutes each day for writing and/or drawing. Encourage your child to write about thoughts and feelings as well as events of the day. Help them get started by giving them a question to answer such as: What is the best thing that happened to you today? If you could go back and do last week all over again, what would you do differently? Remember, you can also have them respond to a book that he/she is reading at home.

Respond: You can respond to journal entries through individual conversations or with comments in their journal. Younger children can draw pictures in their journals and explain their drawings to you. Drawing helps children express themselves on paper and prepares them for writing.

Additional Journal Writing Topics:

- Write 3 questions you would like to ask your teacher/parents/sibling.
- Write a story called “Meet My _____”
- What is your favorite food and how do you make it?
- List all the reasons why people need to know how to read.
- What do you think would happen if an elephant walked into the schoolyard?



~ Crystal Moorefield, Literacy Professional Developer

Standard of the Week

Primary Problem

Guess my shape! I cannot roll and I look like a shoe box, which shape am I? _____

I can roll on one side and I look like a toilet paper roll, what am I? _____

I have no points and I can roll, what am I? _____

Have your child make a page for a Shape Book. Give the writing pattern to your child, it should look like this:

I am a _____. I have _____ sides. I have _____ corners. I look like a _____.



Intermediate Problem

Question: I have a 5 scoop ice cream cone. Each of my 5 scoops is a different flavor of ice cream. The five flavors are blueberry, chocolate, strawberry, vanilla and bubble gum.

You don't know what order my ice cream flavors are from top to bottom. However, here are some clues to see if you can figure out what flavors are from top to bottom:

1. The bottom flavor has 10 letters.
2. The vanilla scoop touches both the chocolate and blueberry scoop.
3. Vanilla is below the chocolate scoop but above the bubblegum scoop.

Use logic to figure out the order of scoops by flavor.

Tip: Use paper cut outs and move them around as you work to solve the problem.

Color Me Mine? Color Me Green!

Shepherd Elementary School's first-ever fund-raiser at the *Color Me Mine* store in downtown Silver Spring raised more than \$600 for the PTA. It also raised tons of smiles from students and parents alike as they chose the items they wanted to paint and have fired up.



Whether you chose animals, flower pots, a notions box or some other item, people reported being highly pleased with the location, the merchandise -- and the cause.

The PTA is exploring a similar fund-raiser with a D.C.-based business. Watch for details in the Mustang and on the PTA listserv

Past Issues of The Mustang are Online

Would you like to read *The Mustang* electronically? Need to refer back to a past issue? Each week, *The Mustang* is uploaded to the files area of the PTA listserv. Join the listserv and click to read.

http://groups.yahoo.com/group/Shepherd_Elementary_PTA/files/%22The%20Mustang%22/

Reader's Digest Update

Not only did the annual Reader's Digest fall fundraiser net some \$12,000 for the Shepherd Elementary PTA, it also generated lots of goodwill among parents and students who pitched in. The Readers Digest Fall Fundraiser Committee distributed orders to well over sixty households on Monday, November 24th and again to several other households on Wednesday, November 26.

Thanks to Chantale Swanson and Earl Yates for lending a big hand with the distribution and also to the head custodian Mr. Kelly, who very kindly moved all orders from the front office area to the auditorium as the delivery company dropped the 100 or so boxes off in the wrong location on the morning of November 24.

Special thanks go to Jack Marrkand for his efforts in heading up the entire Reader's Digest fundraiser and to the Clark family for their generous donation of a Dell desktop computer for the grand prize. (Computer awarded to 5th grader Afia Tyus for selling over \$700 worth of items.)

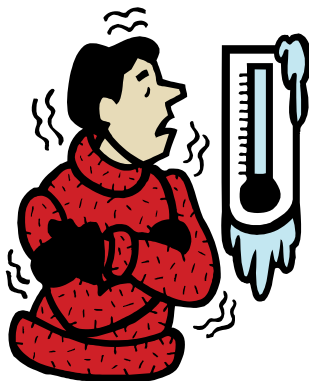


Trivia Corner — Just for Fun!

Each week students will be asked a trivia question. Students should place their name and the answer to the trivia question in the trivia box located outside the cafeteria door. On Tuesdays, one lucky winner will be selected to receive a special treat. Answer this week's trivia questions by Tuesday.

Trivia Question:

What is the coldest temperature ever recorded in Washington, DC?



Answer to last week's trivia question:

The POINSETTIA is the most popular Christmas plant and the number one flowering potted plant in the United States?



Box Tops Happy Holidays Collection Contest

Turn in your Box Tops into the Collection Box in the Main Office anytime between now and December 16. Collection sheets and contest information can be found in the Files section of the PTA listserv and in the brochure holder outside the Main Office. (Class winners will be announced in the January 9 *Mustang*.)

Box Tops Contest Deadline:

**Tuesday,
December 16**



Remember: Keep clipping Box Tops for Shepherd!

Help Wanted: Interim PTA Officer

PTA corresponding secretary Caroline Cooke-Vaughn is expecting a baby this month and will be unable to discharge the duties of corresponding secretary for at least the near future. Any parent interesting in serving in this officer's role on an interim basis should get in touch with PTA president Earl Yates at yates.sespta@yahoo.com.



The Mustang Is YOUR Newsletter

Do you have a comment, a suggestion, or something to share with the Shepherd family in *The Mustang*? Would you like to write an article to be included in *The Mustang*?

Send it in an e-mail to
SESmustang@gmail.com.

Community Events

Annual Ward 4 Holiday Party

Sat, Dec. 13, 6-8 pm
Kingsbury Day School, 5000 14th Street NW
Sponsored by Muriel Bowser's *Ward 4 Cares Constituent Fund*.
Bring the family for holiday festivities and entertainment by the Davis Center Dancers. Contributions to the Constituent Fund will be used to purchase new coats for Ward 4 students

Classes and Camps at CREATE Arts Center

- Gift Workshop on **December 16**, 4:00–5:30 pm, 7-12 year olds, using clay, create a unique piece of pottery or sculpture and wrap it in your own gift wrap.
- Winter Break Arts Camp, 12/22-1/2 (two 1-week sessions, shorter times possible if space is available; no camp 12/25 & 1/1), 6-12 year olds.
- One Day Camps on these no school days, 1/19 and 1/20.
- New afterschool & weekend classes start 1/11.

Register online at www.createartscenter.org. CREATE Arts Center is located in downtown Silver Spring.

December Music Concerts

Looking for a way to celebrate the holidays for FREE? Take the family to the Kennedy Center for the Performing Arts where the DC Youth Orchestra will have their (free!) DCYO Holiday Concert at the Millennium Stage on Friday, **December 12** at 6:00 pm. If you are looking for something closer to home, take the kids to the DCYO Intermediate Level Concert on Sunday, **December 14**, at 4:00 pm at Coolidge High School Auditorium (6315 5th Street NW). This is a great way to expose the children to the joys of classical and jazz music. Young children really enjoy the performance since they can sit close to the stage and watch the musician play and watch their peers play wind and brass instruments. The program usually lasts just over an hour.

The Mustang is for Parents & Kids!

Hey Parents: Be sure to share the activity sections of *The Mustang* with your children each week. You can help your children work through the fun and educational activities featured in each week's *Mustang*. These activities are based on DCPS standards.

And don't forget to have your kids answer the weekly Trivia question! Winners names will be published here in *The Mustang*.



Open House Reminders for 5th & 6th Grade Parents



Deal Middle School

- Tuesday 12/16/2008: Deal Open House, 9 am – 3 pm
- Wednesday 1/7/09: 6th grade transition coffee chat, from 9-10 am (room N101).

5th Graders will be invited to Deal MS in the Spring 2009 for an Open House which will include tour of the school and lunch for ½ day.

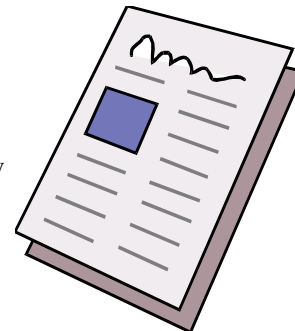
Hardy Middle School

Wednesday, 1/14/09: Open House, 9-11 am
(Call Hardy at 202-698-3885 for more information.)

Newsletter Volunteers Needed

Feedback on the expanded school newsletter has been quite positive. However, putting together the newsletter each week is a collaborative effort. And a *Friday* newsletter loses its luster if it's not seen until *Monday*. *The Mustang* is copied on Thursday afternoons for Friday distribution. It only takes about an hour or so to get the work done.

If you can volunteer to take a regular shift — even once a month — your efforts will help with school communications — and you'll get a jump on the new school news to boot!



Contact Mark Pattison at
202-829-9289 or by email at
pattison_mark@hotmail.com.

Join the PTA Listserv Today

To subscribe, send an email (include your name, your child's name and his/her teacher/class) to:

Shepherd_Elementary_PTA-subscribe@yahoogroups.com.



Shepherd Elementary School

7800 14th Street, NW, Washington, DC 20012
Office Telephone: 202-576-6140
Office Fax: 202-576-7578

Mrs. Jamie Miles, Principal — jamie.miles@dc.gov
Ms. Robyn Brooks, Admin. Assistant — robyna.brooks@dc.gov

The Mustang Newsletter Editors: Kimberly Brandon, Fred Lewis, Mark Pattison, and Matt Sullivan. Layout/Production Editor: Laura Noble

Send your submissions for the next issue of *The Mustang* to:
SESmustang@gmail.com. Deadline is Tuesday at 10:00 am for inclusion in the newsletter issued that Friday.



Shepherd Elementary School Parent Teacher Association

7800 14th Street, NW • Washington, DC • 20012-1490
www.shepherd-elementary.org

PTA Membership Form

The Shepherd Elementary School PTA invites you to join us in enriching your child's school experience. As a member of the PTA, you do not have to attend all meetings or volunteer for many events. While we LOVE to see new faces and look forward to getting to know you, there is no pressure to give more of your time and energy than you can comfortably spare. We appreciate any contributions, funding, talent, ideas, and time, which are all necessary to make Shepherd Elementary School successful.

Return this form to the PTA box in the Main Office by September 17, 2008, with your \$50 check for membership dues, family enrichment fees, and/or supplemental donation (checks payable to "Shepherd Elementary School PTA"). All payments to the Shepherd PTA are tax deductible.

ONE: Become a Shepherd PTA Member

Member name(s): _____

I am a Shepherd teacher/staff member.

Email address(s): _____

Yes, sign me up for the Shepherd PTA Yahoo Group!

Street address: _____

Phone Number(s): _____

Child(ren): _____

Grade: _____ Teacher: _____

Grade: _____ Teacher: _____

Grade: _____ Teacher: _____

I/we have included the PTA membership dues of \$50.

My employer offers matching employer donation

I/we can sponsor the PTA membership dues for another family.

I/we need assistance to pay PTA membership dues.

Every school year, the Shepherd Student Directory is published and made available to Shepherd students and staff only. The directory will be sent home via backpacks with the oldest child in each family in early October. Please check the box if you do NOT want your information listed in the Shepherd Student Directory. If you check the box, the *only* information listed will be your child's name in his/her class listing. If you wish to only have *certain* information appear in the directory, please indicate which information in the comments section on page 2.

I/we do **not** wish to be listed in the Student Directory. (Only the student's name and teacher/grade will be listed if this box is checked.)

TWO: Pay the Annual Family Enrichment Fee

I/we pledge to pay the Family Enrichment Fee in the amount of \$500 per school year. _____ (initial)

Please make checks payable to "Shepherd Elementary School PTA" and put into the PTA box in the Main Office.

Family Enrichment Fee payment options:

\$500 one time payment by September 17, 2008

\$250 payment by September 17, 2008 AND \$250 payment by January 21, 2009

\$62.50 payment by September 17, October 15, November 19, December 17, January 21, February 18, March 18, and April 15.

I/we wish to sponsor the Family Enrichment Fee for another family.

THREE: Make a Supplemental Donation

I/we pledge to pay \$_____ as a supplemental donation (in addition to the PTA membership dues and the Family Enrichment Fee).

This donation is tax deductible. _____ (initial)

FOUR: Volunteer

(If there is more than one person volunteering, please indicate next to each activity *which* person is volunteering for *which* activity.)

I/we would like to volunteer on the following PTA Committees:

- Building and Grounds Committee
- Communications Committee
- Community Outreach Committee
- Academic Enrichment Committee
- Development and Fundraising Committee
- Health and Recreation Committee
- Membership Committee
- Technology Committee
- Upper Grade Activities Committee

(Descriptions of PTA committees are found in the Shepherd School Handbook)

I would like to be a PTA Room Parent for the following
teacher/class: _____

I/we would like to volunteer to assist with the following activities:

- Shepherd Scoop weekly newsletter
- Shepherd Student Directory
- Shepherd Elementary website
- Fall Fest
- Reader's Digest Fall Fundraiser
- Scholastic Book Fair
- Holiday Bazaar
- Spring Chocolate Sale
- Annual Auction
- Field Day
- Teacher Appreciation Breakfast
- Freebie Fundraising programs
- Other _____

FIVE: Give Us Your Ideas! Share your comments!

I/we'd like the PTA to consider the following:

SIGNATURES:

_____ Parent/Guardian/PTA Member signature

_____ Parent/Guardian/PTA Member signature

Join the Shepherd PTA! Let your voice be heard. Be a partner in your child's education.

