

# THE MUSTANG

Home of the Shepherd Mustangs

Friday, October 31, 2008

## November Happenings

### Mark Your Calendars!

**10/31: Shepherd Park Neighborhood 5th Annual Halloween Parade** – Gather in costume at 5:30 pm on the Lower Field; parade at 6:00 pm.

**11/2: Daylight Savings Time ends**

**11/4: Election Day** – School OPEN

**11/10: Math Night** – 6:30-8:30 pm, Auditorium

**11/11: Veterans Day Holiday** – School Closed

**11/14: Color Me Mine Fundraiser**

**11/19: PTA Meeting** – 6:45 pm, Auditorium

**11/24: Readers Digest Order Distribution**

**11/27-28: Thanksgiving Break** – School Closed

## A Word from Ms. Miles!

Dear Parents,

This week I held meetings with students. During these meetings I shared with students the importance of doing their best, being respectful and responsible students. Please ask your student to share with you what we discussed.

Students in grade 3-6 took their DC-BAS. I visited classrooms daily and saw students focused on the task and working hard. The results will be back by the end of next week and will be shared with parents. DIBELS assessment was completed Monday. DIBELS assesses phonological/phonemic awareness, vocabulary development, fluency, and comprehension. You will be receiving more information about DIBELS in the upcoming weeks and ways you can help your student(s) at home.

In last week's newsletter I addressed student tardies; however, I am continuing to observe a significant number of students arriving late to class and I feel the need to express my concerns again. Between last Wednesday and this Monday, I counted a total of 48 students who arrived to school after the 8:45 start time. This does not include the day I was in a

*(continued on page 2)*

## Halloween Safety Tips

We want every student to have a great Halloween – and to come back to school Monday in one piece.

Here are tips for youngsters to follow when they go trick-or-treating this evening:

- Trick-or-treat before it gets really dark,
- Don't eat your treats until you get home. Have an adult check your treats before you eat them.
- Stay in your own neighborhood.
- Wear comfortable, well-fitting shoes.
- Go trick-or-treating with a group. Be sure there are adults in the group, or with you if you are trick-or-treating alone.
- Do not wear a mask. Wear face makeup so you can see better.
- Light jack-o'-lanterns with flashlights.
- Cross streets only at intersections.
- Eat your treats slowly so they'll last longer.
- Visit only houses that are well-lighted.
- Wear a hat that lets you see.

- Your costume should be a good fit. Don't wear one that is too baggy.
- Wear a bright color so you can be seen by drivers.
- If you're invited inside, say, "No, thank you," and do not step inside.

And here are tips for adults to follow:

- If you're NOT giving treats, keep your outdoor lights off.
- If you ARE giving treats, keep your outdoor lights on. When you're done with treats, turn off the lights.
- Did you see the above tip on jack-o'-lanterns? We'll repeat it here: Light jack-o'-lanterns with flashlights.
- If you're driving, drive slowly. Stay well within the speed limit.
- Behind the wheel? Come to a FULL STOP at every stop sign and red light.
- Give right of way to all trick-or-treaters and adults you see in the street.



(continued from page 1)

meeting and was not available to monitor the hallways. Due to the significant number of tardies, teachers are not able to begin their instructional day until 9:00 am or later. Fifteen minutes a day, five days a week, an average of four weeks a month, equals five hours of lost instructional time a month and approximately 50 hours a school year. This does not include student transitions, lunch, recess, restroom breaks and normal interruptions (fire drills, announcements, etc). Our instructional time is precious and when students arrive late, precious time is lost.

On Monday, students who arrive late to school will not be allowed to enter class without a slip from the security desk. Students and parents must report to the desk and sign to receive a slip. Three tardies (not including medical excuses) will result in one Shepherd absent. At the end of the month, we will be recognizing students with perfect attendance

Standing in the hallways and observing students as they enter the building brings my attention to another important issue: safety. I am sure you can agree we all want our students to be safe. One way we can help ensure safety is by monitoring who is in our building at all times. Therefore, beginning Monday, November 4, all perimeter doors will be secure and monitored. PLEASE do not pry the doors open after they have been closed (this has happened three times). All visitors (parents included) must enter the building through the main entrance, sign in at the security desk, and obtain a visitor's pass. When the security guard is away from her post, the ADT call box will be activated and visitors will have to be buzzed into the building. Visitors (parents) will not be allowed to roam the building or visit classrooms unless they are volunteering in the classroom, have an appointment with a teacher, assisting in the office, or visiting the parent center. Each day you entrust your most precious gift(s) to us, please help us keep him/her safe and secure.

In this issue of *The Mustang*, you will find an IB/PYP section. The intent of this section is to help align our thinking in terms of IB and what it entails. In the last few years, there has been progress but not enough. It is time for us to look carefully at what we are doing as a school community, educate ourselves and in some cases begin to see things through a new set of lenses as we seek to accomplish what has yet to happen – IB authorization. We have a ways to go, but together we will see the vision become a reality.

Parent grade level meetings will be held throughout the month of November. Times and dates will be announced in next week's newsletter.

Thank you again for all you do! We will not succeed without each of you!

Warmest regards,  
Jamie B. Miles, Principal

## ***Election Day Is Tuesday!***

Tuesday, November 4, is Election Day. School is OPEN on Election Day. Polls are open from 7 am to 8 pm. The residents of the District of Columbia vote in great numbers, and Shepherd Elementary is home to Precinct 62, consistently one of the highest-turnout precincts in the District. Voting takes place in the school auditorium.

We urge you to fulfill your civic duty and vote. We also urge you to take great CAUTION to and from the polls. The area around school will be much busier with heavier vehicle and foot traffic. Coupled with Sunday's return to Standard Time, please be very careful when walking, biking or driving. Wherever you vote -- whether at Shepherd or away from Shepherd, whether before, during or after school -- get ready to stand in a line and brave the elements, so be cheerful. One parent pushing his child in a stroller four years ago in November remembers walking to Shepherd Elementary mid-morning to avoid the crush -- and stood in a line for 45 minutes anyway! Of course, you may recognize many other parents and neighbors in line with you!



## ***Music Activities for November***

In November, we will study music history and prepare for concerts. We will listen to and read about Paul Robeson, the great American singer/actor/activist. Robeson used his fame and international prestige to speak up for peace and equal rights around the world and in the U.S.

We will rehearse for our annual "Holiday Concert" which will be held on December 10 and for our "Songs of Freedom and Justice" performances in February. More on those concerts later.

On Friday, November 14, we will take our 5th and 6th graders to the Kennedy Center to see excerpts of the opera "Carmen." Then the 5th and 6th graders will compose and perform their own student opera here at Shepherd Elementary School.



## *Shepherd IB-PYP Corner*

### *A New Jump-start for the IB Authorization Process*

Update: Shepherd Elementary School is pursuing authorization to become an International Baccalaureate (IB) World School. These are schools that share a common philosophy — a commitment to high quality, challenging, international education that our school community believes is important for our students.

Our school's status in the authorization process is that of a "candidate school" for the Primary Years Program (PYP). This status was achieved by submitting first an "Interested Schools Form" and then Application Part A (in December 2007). Then, once the IB North America Office has accepted Application Part A, the school enters Phase II of the process as a candidate school. Phase II is typically one year and is meant to be a "trial implementation" period.

Unfortunately, over the last several months the process stalled, and the major activities that should have taken place did not take place. We are now moving forward to implement the required Phase II activities which include: continuing professional development of faculty and staff, developing units of inquiry for each grade level through collaborative teacher planning, implementing three to six of these units per grade level on a trial basis, reflecting on the work and its impact on teaching and learning, and informing all stakeholders about the PYP program and the progress toward authorization.

Once at least three of the inquiry units have been developed, implemented and critiqued, the candidate school is ready to submit its Application Part B. This is followed three to four months later by a visit by a team from IB North America to assess the school's readiness for its authorization.

The Chancellor has recently provided special assistance to support our authorization process through Ms. Patricia Tucker, a current assistant superintendent who, as the principal of Banneker Academic High School, led that school through their IB authorization process. She is working daily with Principal Miles, teachers and staff to plan and implement the Phase II activities. She is also working with the Shepherd PTA Curriculum Committee to be sure to get parent input and involvement in the authorization process and to keep parents informed. Ms. Tucker is fulfilling the duties of the IB coordinator until such time as a Shepherd teacher is trained and ready to take over these responsibilities.

The *Action Plan for the Candidate Phase of PYP* is organized by the PYP "Standards and Practices." The first two standards are that "the school is committed to the principles defined in the IBO Mission Statement" and to the "qualities, attitudes and characteristics described in the IB Learner Profile." Therefore, in this issue of the newsletter, we are sharing with you the IBO Mission Statement:

The International Baccalaureate aims to develop inquiring, knowledgeable and caring young people who help to create a better and more peaceful world through Intercultural understanding and respect.

To this end the organization works with schools, governments and international organizations to develop challenging programmes\* of international education and rigorous assessment.

These programmes encourage students across the world to become active, compassionate and lifelong learners who understand that other people, with their differences, can also be right.

#### **PYP Lesson of the Week:**

Reflection Question: "Could other people also be right (as the last sentence says)? What does that mean to you?"

*Parents are strongly encouraged to initiate dialogue about this with their children. The discussion could focus on daily interactions that people have in family situations, at school or at work, or it could extend to relating the reflection question to the opposing campaigns of presidential candidates McCain and Obama.*

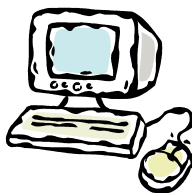
Next week we will begin to share with you the 10 elements of the IB Learner Profile. If you wish to learn more about the IB on your own, visit the website, [www.ibo.org](http://www.ibo.org), where there is a wealth of information about the IB philosophy and all IB programs.

\*Please note that in official IB documents you will find the European spelling of some English words.

### *Have You Joined the Listserv Yet?*

If you have not joined the Shepherd PTA Listserv, here is the e-mail address you can use to subscribe:  
[Shepherd\\_Elementary\\_PTA-subscribe@yahoogroups.com](mailto:Shepherd_Elementary_PTA-subscribe@yahoogroups.com).

Be sure to include who you are (your name, your student's name and his/her teacher's name).



## DCPS Standard Activity of the Week

### Primary Problem

Sam put 12 pencils in 3 equal groups. How many pencils are in each group?

\_\_\_\_\_ pencils are in each group.

### Intermediate Problem

Jackson walked from Shepherd Elementary to Arlington, Virginia. It took 1 hour 25 minutes to walk from Shepherd to Georgetown. Then it took 25 minutes to walk from Georgetown to Arlington. He arrived in Arlington at 2:45 P.M. At what time did he leave Shepherd?

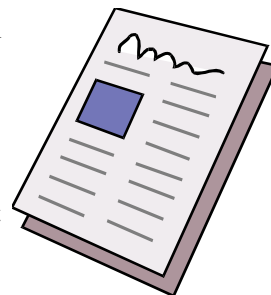
Jackson left Shepherd at \_\_\_\_\_.

## Newsletter Volunteers Needed

With a new, bigger school newsletter, we need help in copying, collating, stapling, counting, and distributing the newsletter – more than ever before. And a *Friday* newsletter loses its luster if it's not seen until *Monday*.

Assembling the newsletter now starts at 4:00 pm Thursdays. Stop at the main office to help with copying, collating, stapling, etc. Three people are needed each week. It takes about an hour to get the work done. If you can take a regular shift every week — or even once a month — your efforts will help with school communications — and you'll get a jump on the new school news to boot!

Contact Mark Pattison at 202-829-9289 to learn more, or e-mail him at [pattison\\_mark@hotmail.com](mailto:pattison_mark@hotmail.com).



## Here's the 'Deal' on International Baccalaureate

Alice Deal Middle School hosted a parent community session October 21 to discuss the implementation of the International Baccalaureate Middle Years Program (IB/MYP) at the school. Earl Yates and Anastasia Norton, representing Shepherd's PTA, attended the session and took part in the various activities that ensued. IB/MYP is designed as the follow-on to the Primary Years Program (IB/PYP) that Shepherd is currently working on. The session was facilitated by James Albright, Deal's IB MYP coordinator, and was modeled as an MYP unit/lesson. The guiding question was: How does the development of an IB Middle Years Program at Alice Deal affect the local community?

The session assessed prior knowledge of IB, and built on key components of the IB/MYP curriculum -- the IB Learner Profile -- the aim of all IB programs is to develop internationally minded people who, recognizing their common humanity and shared guardianship of the planet, help to create a better and more peaceful world. IB learners strive to be: Inquirers, Knowledgeable, Thinkers, Communicators Principled, Open-Minded, Caring, Risk-Takers, Balanced, and Reflective. During this part of the session, parents reflected on their own educational experiences and discussed how they learned these characteristics in school.

Another key component of the IB/MYP are the "Areas of Interaction" Five specific themes that are used to help shape teaching units:

1. Approaches to Learning
2. Community and Service
3. Human Ingenuity
4. Environments
5. Health and Social Education

The culminating activity involved community members' identifying features of the MYP and the community that effect and reinforce each other. Parents brainstormed together to identify specific features of the Deal community that could build on and reinforce the Areas of Interaction central to IB curriculum. Parents identified things like: proximity to Rock Creek Park, proximity to a water-treatment facility, proximity to Walter Reed Army Medical Center, issues like voting rights in the District, parental involvement in local, regional and national politics, and more.

As both the Deal principal and IB Coordinator stressed, each IB program is authorized independently. This means that each school determines what the program will look like in its community. For example, at Deal Middle School the curricula used for the IB MYP will be the D.C. Public Schools' program standards. Each authorized program must follow the basic framework of the IB MYP but each has emphases and characteristics that are unique. At Deal, the IB MYP will reflect the students, parents, teachers and school leaders that participate in its implementation and development. Deal is in the midst of a process to receive IB World School status by the middle of the 2009-2010 school year.

~ Anastasia Norton





## Shepherd Community Corner

### Washington Youth Garden's Annual Dig In Your Heels Race And Family Fun Run/Walk

Sunday, Nov. 2, starting at 8 am (remember to move your clocks back one hour before you go to bed Saturday night) and running until 11:30 am at the National Arboretum. 3501 New York Ave. NE.

Runners, families, youth teams, teams and walkers are welcome to experience the autumn beauty of the National Arboretum and help a worthwhile cause. The run/walk will be followed by visit to the Community Connection Healthy Lifestyles Tent with activities and information for children and all ages, and an awards ceremony with great prizes from local venues. There are free performance T-shirts to all participants, free parking, and leashed dogs welcome on the one-mile fun run/walk!

Pre-registration is \$25, or day-of registration is \$30. Children 12 and under are free! Family discount is \$20 an adult; team discount is six adults for \$120; and the youth team rate is \$100. All discounts available pre-registration only! Advance registration is available online at [www.active.com](http://www.active.com), and type in "National Arboretum." For event details, e-mail [Hannah.Jayanti@ars.usda.gov](mailto:Hannah.Jayanti@ars.usda.gov). For more info, access <http://www.usna.usda.gov/Gardens/collections/youth.html>

### Northminster Presbyterian Health Fair

Northminster Presbyterian Church will host a community health fair on Sat., Nov. 8, from 11 am to 4 pm at the church, 7720 Alaska Ave., NW. The purpose of the Health Fair is to increase health awareness through education and prevention. There will be free screenings for oral health, diabetes, vision, blood pressure, and free HIV and STD testing. Participants will also be able to learn more about asthma and stroke, among other things, and receive free educational materials. At the same time, Northminster will sponsor its annual bazaar on the

church grounds from 9 am to 3 pm, and there will be face painting and a moon bounce to keep children happy and occupied. For more details, call 829-5311 or send an e-mail to [northminster@verizon.net](mailto:northminster@verizon.net). If you'd like to volunteer during the event, send an e-mail to [fon51980@gmail.com](mailto:fon51980@gmail.com).

### Lowell School Diversity Forum

Lowell School will host a community event on diversity and its continued relevance in schools. This event will be led by NPR's Michel Martin, to be held Wed., Nov. 12, 7-9 pm in the Lowell gymnasium.

Host of NPR's "Tell Me More," Martin, a Shepherd Park resident, has worked as a journalist for more than 25 years, first at the Wall Street Journal and the Washington Post, then at ABC News where she won an Emmy award for her reporting on the international campaign to ban land mines. While at ABC, Michel was nominated for two other Emmys, one for a report for the "Nightline" series "America in Black and White" and one for a report for "Day One" on children's racial attitudes.

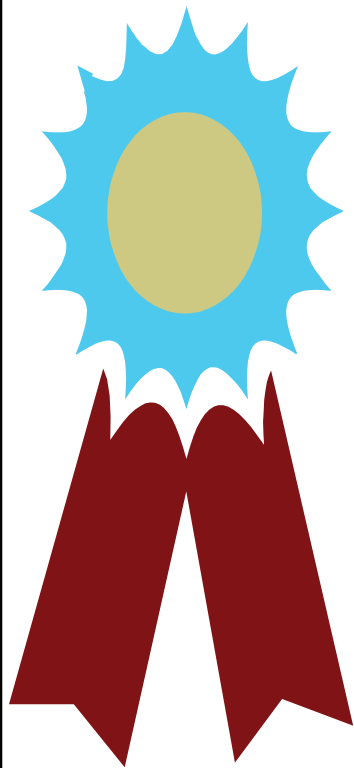
"I am fascinated by the different people who live lives different from my own. And at the same time, I feel connected to all of these lives being a journalist, a woman of color, a wife and mother," Martin says.

That night, Lowell School will also be sharing multiple publications for teachers and parents to help aide in conversations about diversity. As well, there will be copies of published articles written by two Lowell staff members about institutionalizing diversity and the education of African-American males. To RSVP, e-mail [reservey-ourseat@lowellschool.org](mailto:reservey-ourseat@lowellschool.org).

## Students of the Week

All of the following students demonstrated exemplary behavior during the past two weeks by listening and following instructions, turning in quality work, and helping their peers and teachers:

- ... (Ms. Gibbs' PreK class)
- Kayla Muir and Kofi Hall (Ms. Holt's PreK class)
- Daniel Martin and Amari Hall (Ms. LaPenna's PreK class)
- Camille Jones and Ethan Reece (Mr. Byers' K class)
- ... (Ms. Kuawogai's K class)
- ... (Ms. Miller's K class)
- Colyar Trimble (Mrs. Crockett's 1<sup>st</sup> grade class)
- Randi Baldwin and Leana Thomas (Ms. Kinsler's 1<sup>st</sup> grade class)
- Mattie Melnyk (Ms. Johnson's 2<sup>nd</sup> grade class)
- ... (Ms. Thurber's 2<sup>nd</sup> grade class)
- Justice Page and Philemon Powell (Ms. Chambliss' 3<sup>rd</sup> grade class)
- Jasmine Barrow (Ms. Thomas' 3<sup>rd</sup> grade class)
- William Davis (Ms. Gilmore's 4<sup>th</sup> grade class)
- Mark Jackson (Ms. Valentine-Nelson's 4<sup>th</sup> grade class)
- Luc Nikiema (Mr. Leonard's 5<sup>th</sup> grade class)
- Alexis Smith and Milan Jones (Ms. Ulba's 5<sup>th</sup> grade class)
- Joy Nicholas and Christopher Askew (Mr. King's 6<sup>th</sup> grade)
- Shantice Wade (Ms. Shaibu's class)



## Freebie Fundraisers

There are a number of “freebie” fundraisers going on at Shepherd Elementary School. These are fundraisers that do not cost YOU any additional money than you would have spent anyway!

### Box Tops for Education –

- Go to [www.boxtops4education](http://www.boxtops4education) to see list of eligible products and marketplace vendors
- Put Box Tops into Collection Box in Main Office.

### Campbell's Labels for Education –

- Go to [www.labelsforeducation.com/](http://www.labelsforeducation.com/) to see a list of eligible products.
- Put Labels for Education points into Collection Box in Main Office.

### Cork Recycling –

- Put corks (real and synthetic) into Drink Pouch Collection Box in Main Office

### Drink Pouch Recycling –

- Remove straw/wrapper, squeeze out all juice,
- Flatten drink pouch
- Turn into Drink Pouch collection box in Main Office

### eScrip –

- Designate your Mastercard or Visa
- Shepherd's Safeway/eScrip designation code: **500018723**

### French Toast School Uniforms –

- Go to [www.frenchtoast.com](http://www.frenchtoast.com)
- Shepherd's school code: **QS4SJF**

### Giant A+ Bonus Bucks –

- Must designate Shepherd's code each year to participate.
- Shepherd's A+ Bonus Bucks Code: **00154**

### Lands' End School Uniforms –

- Specify Shepherd “Preferred School Number” when placing an order from the Lands' End School Uniform catalog or Lands' End School Uniform website.
- Shepherd's Preferred School Number: **9001-3120-2**

### Safeway Club Card and eScrip –

- Must register Safeway Club Card with eScrip each year
- Donations for Safeway purchases from Oct. through May.
- Shepherd's Safeway/eScrip designation code: **500018723**

### Sniders Superfoods Receipts –

- Bring current year receipts to the Main Office in an envelope marked “Sniders Receipts”

### Target “Take Charge of Education” –

- Designate your Target Card or your Target Visa
- Shepherd's “Take Charge of Education” Enrollment Code: **39625**

If you have any questions about any of Shepherd's “Freebie Fundraising” opportunities for Shepherd Elementary School, or to volunteer to assist with any of the “freebie fundraisers,” please contact our “Freebie Fundraising” program coordinator, Laura Noble at [TaylorFarm@kddmgroup.com](mailto:TaylorFarm@kddmgroup.com).



## It's Not Too Early To Start Planning Your Holiday Gifts!

It's a Paint Your Own Pottery ‘Fun’raiser with Shepherd Elementary!

When: Friday, November 14th  
Time: Anytime between 6:00-10:00pm  
Where: *Color Me Mine* in Downtown Silver Spring

### How it works:

- You pick a piece – we have over 200 items to choose from
- You paint it – create your own special design
- We fire it – your pieces are ready to pick up in one week
- Cost: \$15 per table studio fee (good for up to 4 people) plus the price of the pottery selected

50% of the evening's proceeds will be donated to Shepherd Elementary School!

Support Shepherd and get a head start on your holiday gifts!



Color Me Mine is located at 823 Ellsworth Drive in Downtown Silver Spring. Reservations are encouraged. (Call 301-565-5105 to reserve your table.)

The Art Of Having Fun.

## Trivia Corner — Just for Fun!

Each week students will be asked a trivia question. Students should place their name and the answer to the trivia question in the trivia box located outside the cafeteria door. On Tuesdays, one lucky winner will be selected to receive a special treat.

Answer this week's trivia question by Tuesday.

### Trivia Question

What President had been a star on the University of Michigan football team?

- William Henry Harrison
- Gerald Ford
- Bill Clinton
- Dwight D. Eisenhower



Answer to last week's trivia:

If India could read, her favorite book would be...



*If You Take a Mouse to the Movies,*  
by Laura Numeroff and Felicia Bond

## Family Math Night is Coming!



When: Monday, Nov. 10  
Time: 6:30-8:30 pm  
Where: SES Auditorium

Look for more information regarding this fun family event in next week's issue of *The Mustang*.

## Reader's Digest Fall Fundraiser Update

Orders for the Shepherd PTA Candy/Gift Wrap Fundraiser, held in partnership with Reader's Digest, will be distributed Monday, November 24.

The fundraiser, one of the school's largest and most successful fundraising drives of the year, generally nets about \$10,000 annually, which is used to fund school activities and programs.

Because literally hundreds of orders were made, it's critical to separate purchases so that students and/or their parents can pick up their items quickly and efficiently.

To that end, PTA Assistant Treasurer Jack Marrkand needs parent volunteers to help organize the distribution that day. To volunteer, e-mail Jack at [jmarkand@pfd.org](mailto:jmarkand@pfd.org).

## Good Morning Mustangs

Do you want to be on the morning announcement news crew?? Students are needed to fill *Good Morning Mustangs* news crew positions. The selection will be based on a first come basis. There will be a different news crew each week. Students must be able to report to the Front Office by 8:35 am on each day of their assigned week. Announcements will start promptly at 8:45 am each morning. Students who are interested in joining the crew should pick up an application from their classroom teacher.



## Get Ready to Turn Back Time

Daylight Saving Time (DST) ends on the first Sunday in November. Remember to change your clocks **BACK** one hour on

**November 2, 2008**



## Parents in High Places

Did you know that a Shepherd Elementary School parent has a seat representing Wards 3 and 4 on the D.C. State Board of Education? It's true! His name is Sekou Biddle, father of third-grader Theo.

The State Board of Education met October 22 to deal with pre-K standards, conduct a hearing on world language standards, discuss truancy policy and a parental involvement policy that would hold schools accountable on engaging and involving parents on an authentic basis. The board also discussed teachers teaching outside their field of expertise and assessed which school restructuring programs are working (and working best).

Addressing the Shepherd PTA meeting October 15, Biddle said he would provide any updates on these matters to the Shepherd PTA listserv.

~ Mark Pattison

## School Directory Notice

Work has commenced on the annual school directory. Our goal is to get it to you before the holidays, but to make the directory complete we need to have information from all families. A school directory form will appear soon in your child's backpack asking you to fill out such things as your name, your child's name, grade, teacher, and contact information like address, phone and e-mail. Fill out all lines that you want to see included in your child's entry in the directory, and return it to the PTA box in the school office no later than Friday, November 14 — two weeks from today. Only one completed school directory form is needed per family. It may seem tedious to fill out yet another form, but it is necessary to ensure we have the most up-to-date contact information possible.

If you have any questions, contact Kimberly Brandon at 202-722-0569 or [brandonsdc@hotmail.com](mailto:brandonsdc@hotmail.com).



## Our Newsletter Is Your Newsletter

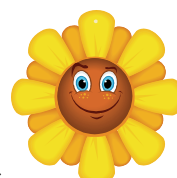


*The Mustang* is bigger, brighter, and better than before. All we need now are your contributions! Do you have a comment, a suggestion, an article to write, something to share? Go right ahead... Send it in an e-mail to [SESmustang@gmail.com](mailto:SESmustang@gmail.com).

The newsletter is made fresh every week!

## Fall Flower Bulb Sale

Thanks to all the families that participated in the fall flower bulb sale. The PTA raised over \$400 with our inaugural bulb sale. You should be receiving orders between November 10<sup>th</sup> and 13<sup>th</sup> though some orders may ship earlier. We're looking forward to seeing some beautiful flowers in the Spring.



~ Doug Noble, PTA Treasurer

## Halloween Is Here!

School gets out at 12:15 today — not because it's Halloween (although you might like to think so), but because it's a teachers' record-keeping day.

The big event for tonight is the fifth annual Halloween Parade sponsored by the Shepherd Park Citizens Association. It will be held on the Lower Field. Assemble at the field anytime after 5:30 pm. The parade starts at 6:00 pm sharp! All trick-or-treaters can take one lap around the track. Along the way, there just may be folks able to give you a head start on your trick-or-treating. In past years, the Shepherd Park Citizens Association has also given glow sticks to the first 100 kids showing up to help keep them seen and safe on Halloween.

If you haven't charted out your trick-or-treat route yet, members of the Shepherd Park Citizens Association will hand out to grown-ups copies of the neighborhood trick-or-treat list. About 100 different addresses will appear on the list, covering the whole neighborhood between Walter Reed and the Maryland-DC line, and from Georgia Avenue to Rock Creek Park.

The parade will be canceled, of course, in the event of rain, but the preliminary forecast for Halloween at *Mustang* press time calls for clear skies, with a high of 59 degrees and only a 10 percent chance of rain. Sunset comes to Shepherd Park at 6:08 pm on Halloween. Remember to trick-or-treat only at houses whose porch lights are turned on. And be safe and stay safe!



## The Kids Have Voted and Obama Wins!

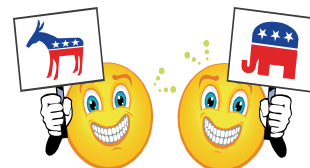
A little less than a month before the presidential elections, students across the country cast their votes in the Scholastic Presidential Election Poll, choosing Democratic candidate Barack Obama over Republican John McCain. U.S. Sen. Obama (D-Ill.) received 57 percent of the vote while U.S. Sen. McCain (D-Ariz.) got 39 percent. Nearly 250,000 kids in Grades 1 through 12 submitted paper and on-line ballots in the nationwide contest. Polls closed October 10 and the vote was announced October 14 on Scholastic's Web site, [www2.scholastic.com](http://www2.scholastic.com).

Historically, the kid vote has been similar to the results of the general election with only two elections seeing a different outcome. In 1948, kids voted for Thomas E. Dewey over Harry S. Truman and in 1960, more students voted for Richard M. Nixon than for John F. Kennedy. In 2000, a majority of student voters chose George W. Bush, mirroring the Electoral College result, but not the result of the popular vote, according to the Web site.

Interestingly, but not surprisingly, Obama and McCain weren't the only people to receive votes. This year's election had the highest percentage of write-in votes in the history of the poll, which began in 1940. Four percent of the students voted for other people like comedian Stephen Colbert, and entertainers Miley Cyrus and the Jonas Brothers. Some even voted for themselves. Most of the write-in votes — 11 percent of the 4 percent — were for U.S. Sen. Hillary Clinton (D-N.Y.).

For more info and to see the breakdown of votes in the key swing states go <http://www2.scholastic.com>.

~ Paula Brooks



## A Friendly Reminder



The instructional day begins promptly at 8:45 am. It is imperative that students arrive on time (between 8:25-8:35). Beginning Mon., Nov. 3, students who arrive after 8:45 am will have to report to the office to pick up a late slip. Students will not be permitted to class without a slip from the office. Our instructional time is precious! Every second counts! When students are late they miss out!

## Shepherd Elementary School

7800 14th Street, NW, Washington, DC 20012  
Office Telephone: 202-576-6140  
Office Fax: 202-576-7578

Ms. Jamie Miles, Principal — [jamie.miles@dc.gov](mailto:jamie.miles@dc.gov)  
Ms. Robyn Brooks, Administrative Assistant — [robyna.brooks@dc.gov](mailto:robyna.brooks@dc.gov)

The *Mustang* Newsletter Editors: Kimberly Brandon, Fred Lewis, Mark Pattison, and Matt Sullivan

Send your submissions for the next issue of *The Mustang* to: [SEMustang@gmail.com](mailto:SEMustang@gmail.com). Deadline is Tuesday at 10:00 am for inclusion in the newsletter issued that Friday.